



ONSHORE
LOWER
CONGO BASIN



ONSHORE
KWANZA BASIN

2023
LICENSING ROUND
OF OIL CONCESSIONS
REPUBLIC OF ANGOLA

ONSHORE LOWER CONGO BASIN

Portfolio
OPPORTUNITIES

Block
CON7

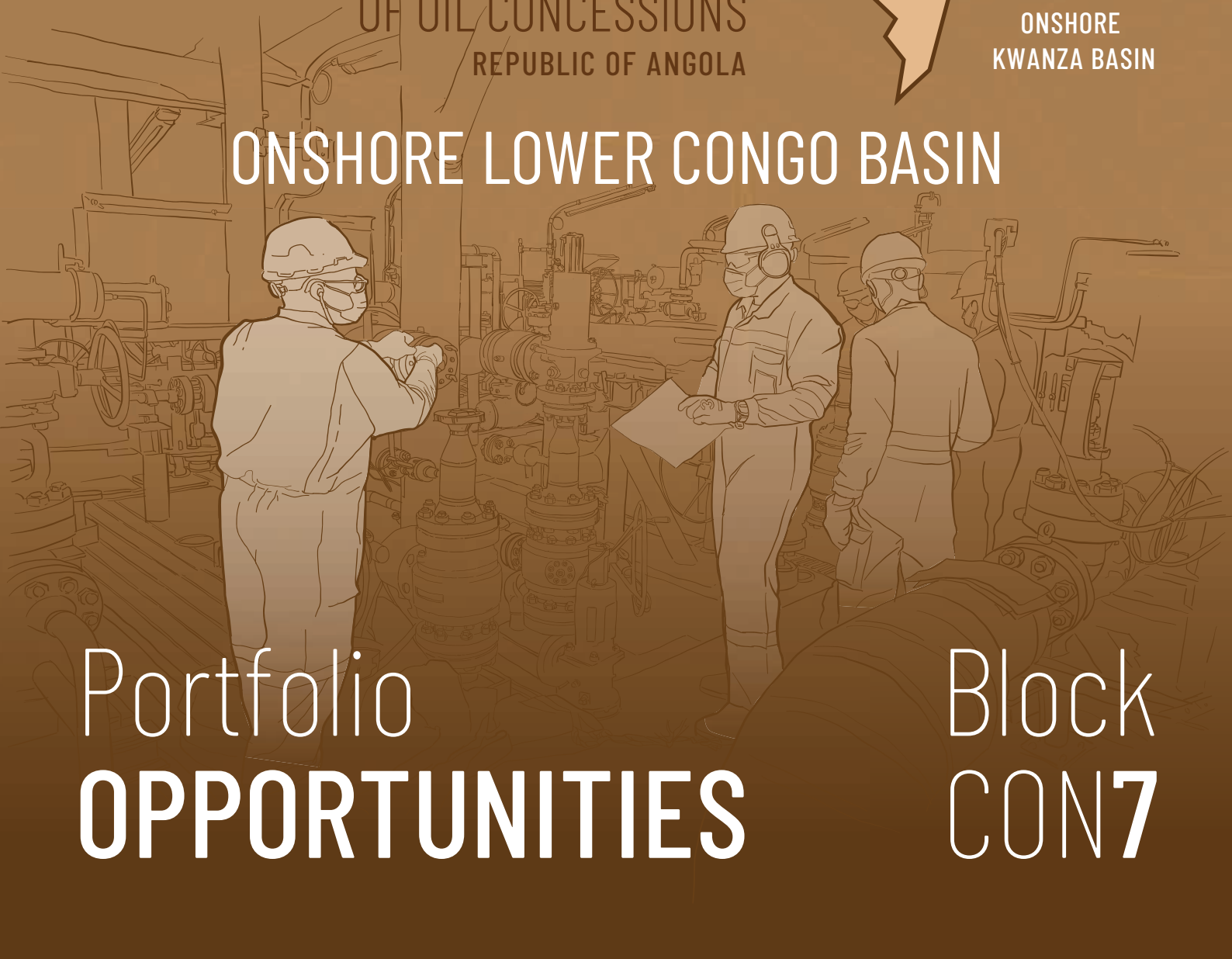


Table of Contents

INTRODUCTION.....	3
1. Geographic Location.....	4
2. Geological Settings.....	5
3. Exploration History.....	8
4. Petroleum System.....	10
4.1 Source Rock.....	10
4.2 Reservoir.....	10
4.3 Seal Rock.....	10
4.4 Trap.....	10
5. Exploration Opportunities.....	11
5.1 Identified Leads.....	11
5.1.1 Pre-salt Leads.....	12
6. Final Remarks.....	13
7. Bibliography.....	13

LIST OF FIGURES

Figure 1: Location Map of Block CON 2, ANPG 2022.....	4
Figure 2: Geological map of Block CON 2, ANPG 2022.....	5
Figure 3: Geological model of Block CON 2, ANPG 2022.....	6
Figure 4: 2D seismic lines, ANPG 2022.....	8
Figure 5: Magnetometry map Block CON 2, ANPG 2022.....	9
Figure 6: Lithostratigraphic Column of the Onshore Congo Basin, ANPG 2022.....	10
Figure 7: Lead 1 & 2, ANPG 2022.....	11
Figure 8: Lead 3 & 4, ANPG 2022.....	12

Introduction

The portfolio of opportunities describes the general characteristics of Block CON 7, presenting the main geological and geophysical aspects from the exploration history, petroleum system, and a series of opportunities identified in the block. This characterization is the result of the survey and framing of existing data, which allowed the seismic interpretation and the elaboration of the geological model by the ANPG/DEX team.

The Lower Congo Basin is known for its onshore and offshore exploration history of two significant plays, Pre-salt and Post-salt (Albian). The petroleum system in the pre-salt comprised the shales of the Bucomazi Formation as source rock, the sands of the Lucula Formation, carbonates of the Toca Formation, and the sands of the Chela Formation as the main reservoir, and the seal rock is composed mainly of salt of the Loeme Formation. In the Post-salt, the Pinda Albian source rock comprises carbonate facies with significant quantities of organic-rich matter. As a reservoir, the shale of the Iabe Formation seals the same formation's carbonates, and the trap types are combined.

Block CON 7 is in the central-eastern portion of the Lower Congo Basin. With no record of drilled wells, the block was re-evaluated from correlations with neighboring Blocks. The company Alrosa conducted a regional 2D seismic survey in the Basin.

Structures with possible hydrocarbon accumulation were identified at the Pre-salt and Post-salt levels. The leads identified from integrating geological and geophysical data present estimated prospective resources of 710 to 1 150 MMBO.

1. GEOGRAPHIC Location

The **Block CON 7** is located in the central-eastern portion of the Lower Congo Ground Basin, Zaire Province, bounded on the north by Blocks CON 4 and CON 5, on the south by Blocks CON 8 and CON 9, on the east by the Precambrian basement and on the west by Block CON 6, defined by the geographic Coordinates parallels 6°26'39" and 6°38'59" S and meridians 12°48'18.00" and 12°48'18" E, covering a total area of approximately 745.60 km² (Figure 1).

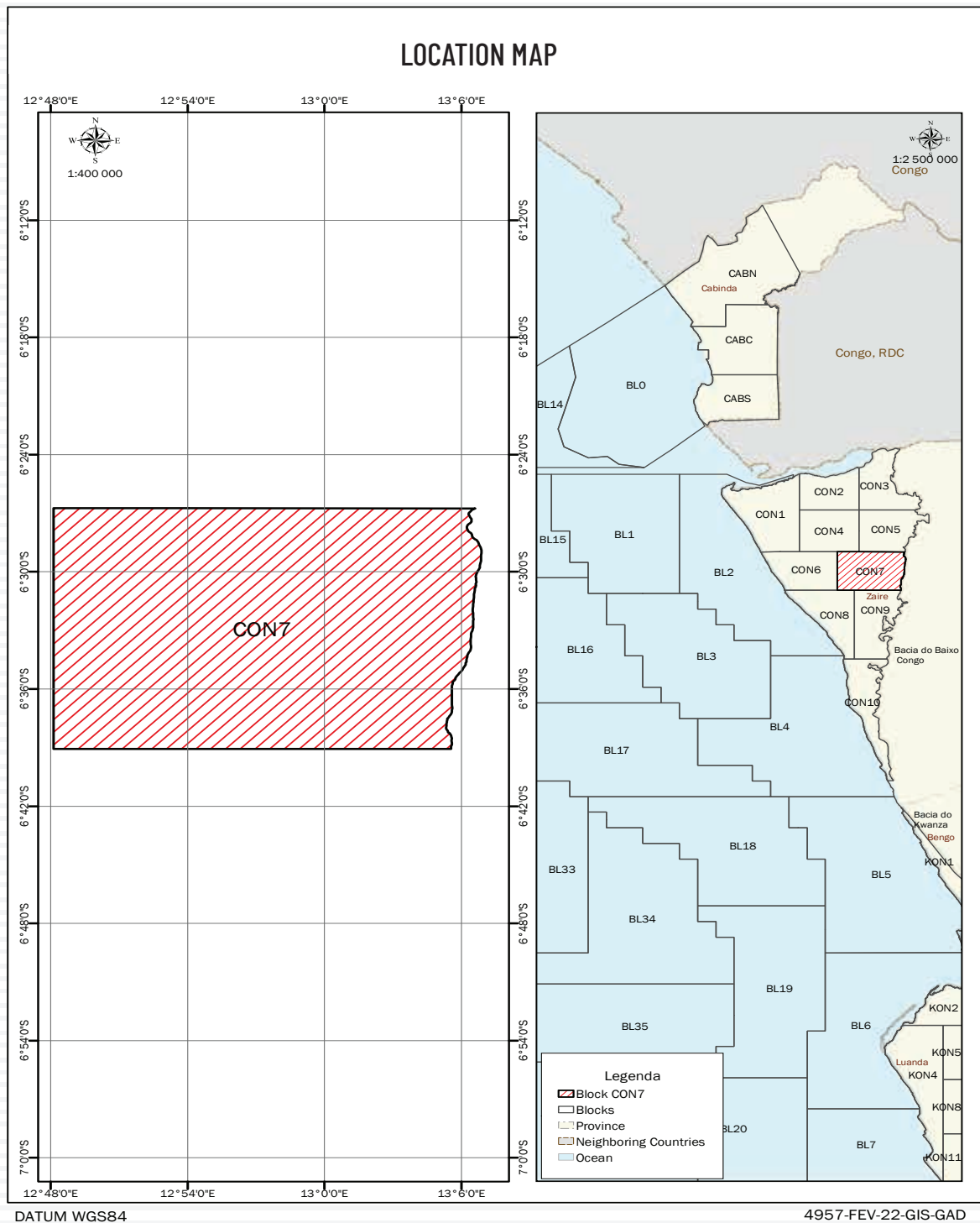


Figure 1: Location map of Block CON 7, ANPG 2022

2. GEOLOGICAL Settings

The outcrops of the **Block CON 7**, represented by sediments of Precambrian to recent age, according to the geological chart of the Basin (Figure 2). The Block CON 7 is part of the Onshore portion of the Congo Basin and its sedimentary history, characterized by paleoenvironmental variations between continental, transitional and marine environments, in which two (2) units are evident: Pre-salt and Post-salt plays.

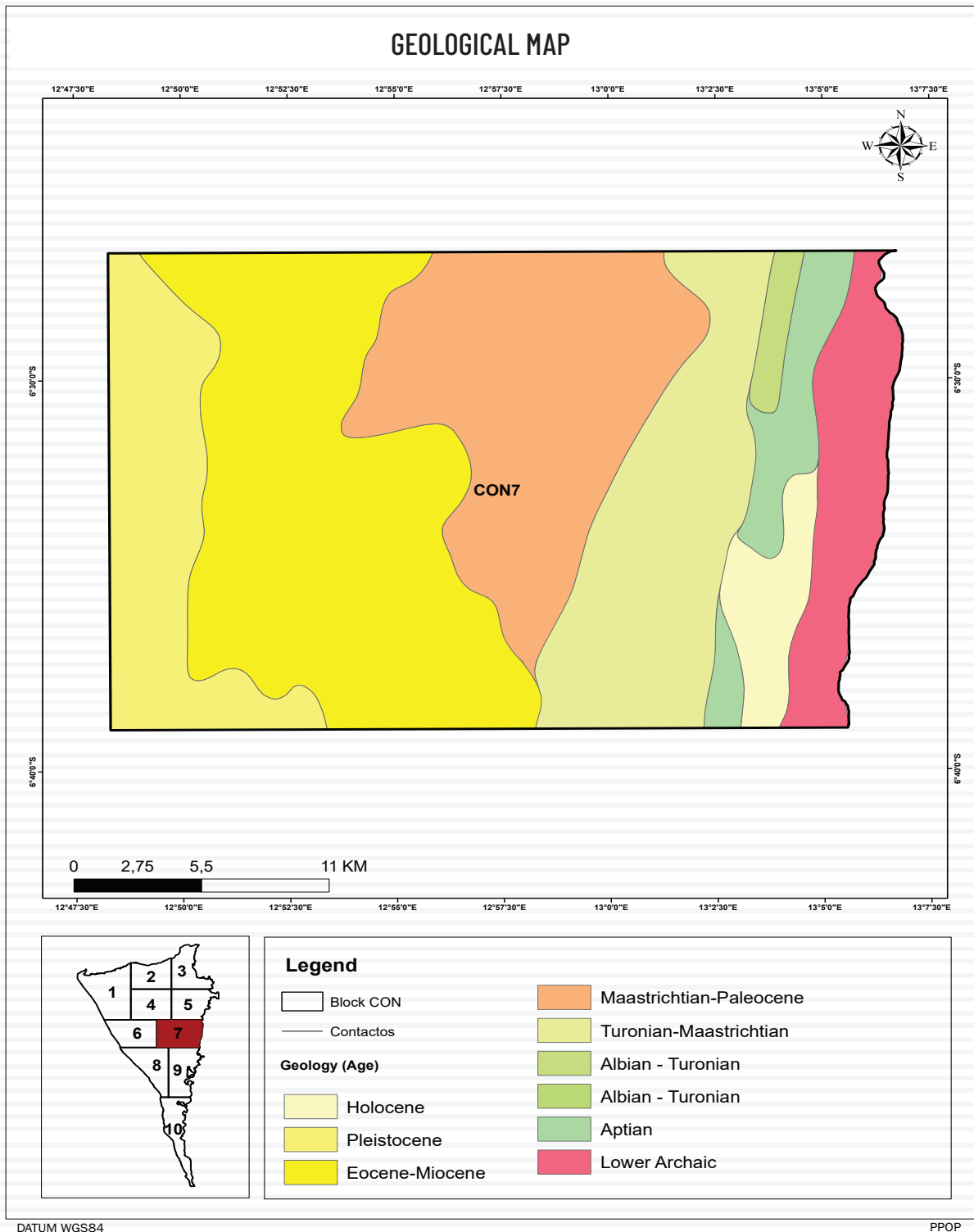


Figure 2: Geological map of the Block CON 7, ANPG 2022

Pre-salt Unit

The Pre-salt unit is characterized by the presence of horst and grabens type structures in all extensions and faults eradicated in the basement in SO-NE direction; as we move to the west, we observe a deeper area, which corresponds to a zone with accumulation, preservation, and hydrocarbons generation potential, that through faults migrate to reservoirs.

At the beginning of the Aptian, with the influences of the first marine incursions and high temperatures, a lagoonal depositional system developed, forming a salt layer, representing the main seal at the level of this unit.

Post-salt Unit

The Post-Saliferous unit is characterized by post-depositional extensional structures, which move under the Aptian salt, creating a roll-over anticline supported by listric normal faults throughout, overlain by Cretaceous-aged sediments. In contrast, Tertiary sediments lie to the west.

The argillite sediments and organic-rich calcilutites of the Pinda Formation constitute the source rocks at the Albian level. Fractured dolomitic limestones and sandstones form the main reservoirs, and Upper Cretaceous clays as the cover rock.

The Upper Cretaceous was marked by significant marine transgressions, which caused the deposition of vast amounts of pelagic sediments such as marls, gray clays, brown limestones, micaceous siltstones, and sandstones deposited during minor marine regressions. Upper Cretaceous clays of the Iabe Formation are proven source rock.

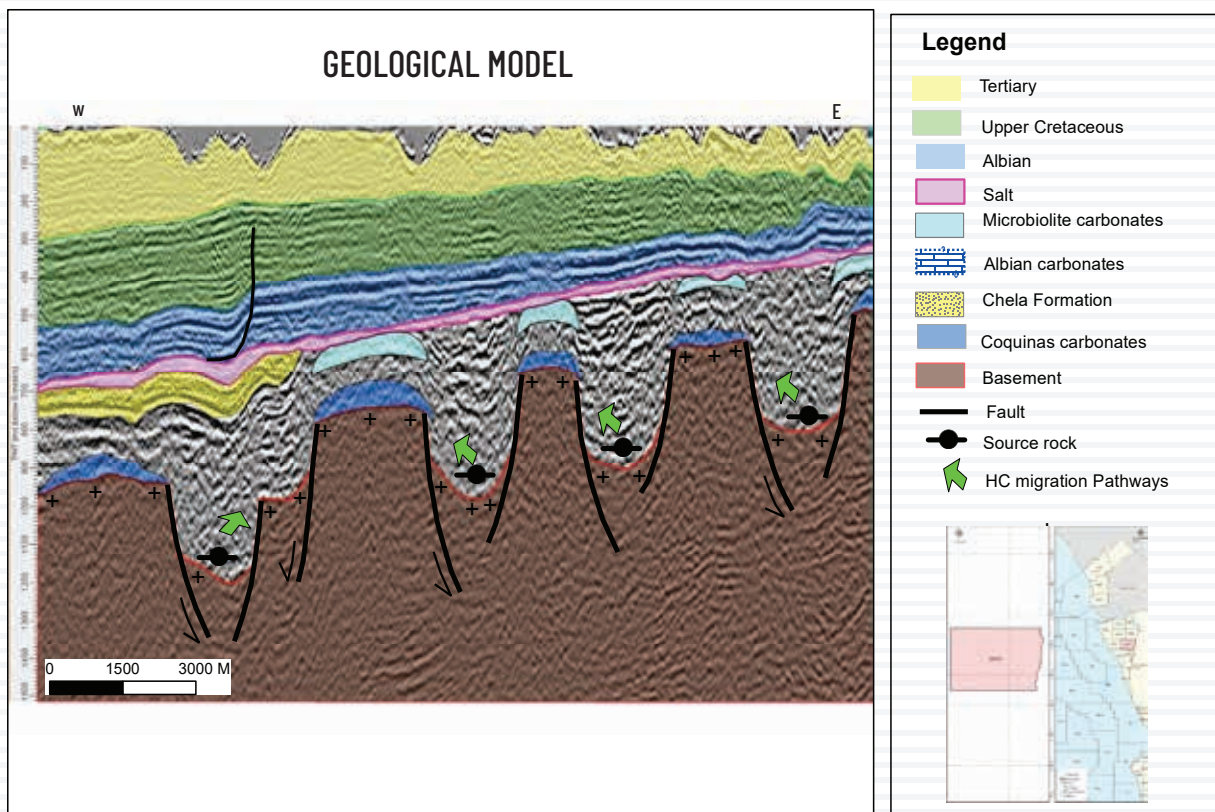


Figure 3: Geological model of Block CON 7, ANPG 2022

3. **EXPLORATION** History

The first exploration work in the basin dates to 1916, with the drilling of 8 wells leading to the discovery of the Ngondo field. However, no well drilling work has been carried out in the block.

In 1968, the first commercial oil discovery was made by Petrangol in the Soyo region, Zaire province, in the Cabeça da Cobra well, followed by the discovery of the Quingula, Nzombo, Ganda, Pangala, and Quinfuquena fields and the Sereia natural gas field.

The FS-FST Association exploration period began between 1969 and 1988 with sixteen commercial oil discoveries, one commercial oil and gas discovery, and two commercial gas discoveries. The discovered resources total approximately 862 MMBO (STOOIP), distributed in 46.35 MMBO (STOOIP) and 815.5 MMBO (STOOIP) for the FS and FST Association, respectively, currently operated by Somoil.

From 2008 to 2009, Alrosa conducted a regional seismic survey in the Basin; approximately 183.91 linear km of 2D seismic were acquired in the block (Figure 4).

In 1998 ENI and 2009-2012, Geokinetics conducted aero gravimetry and magnetometry surveys of the basin (Figure 5).

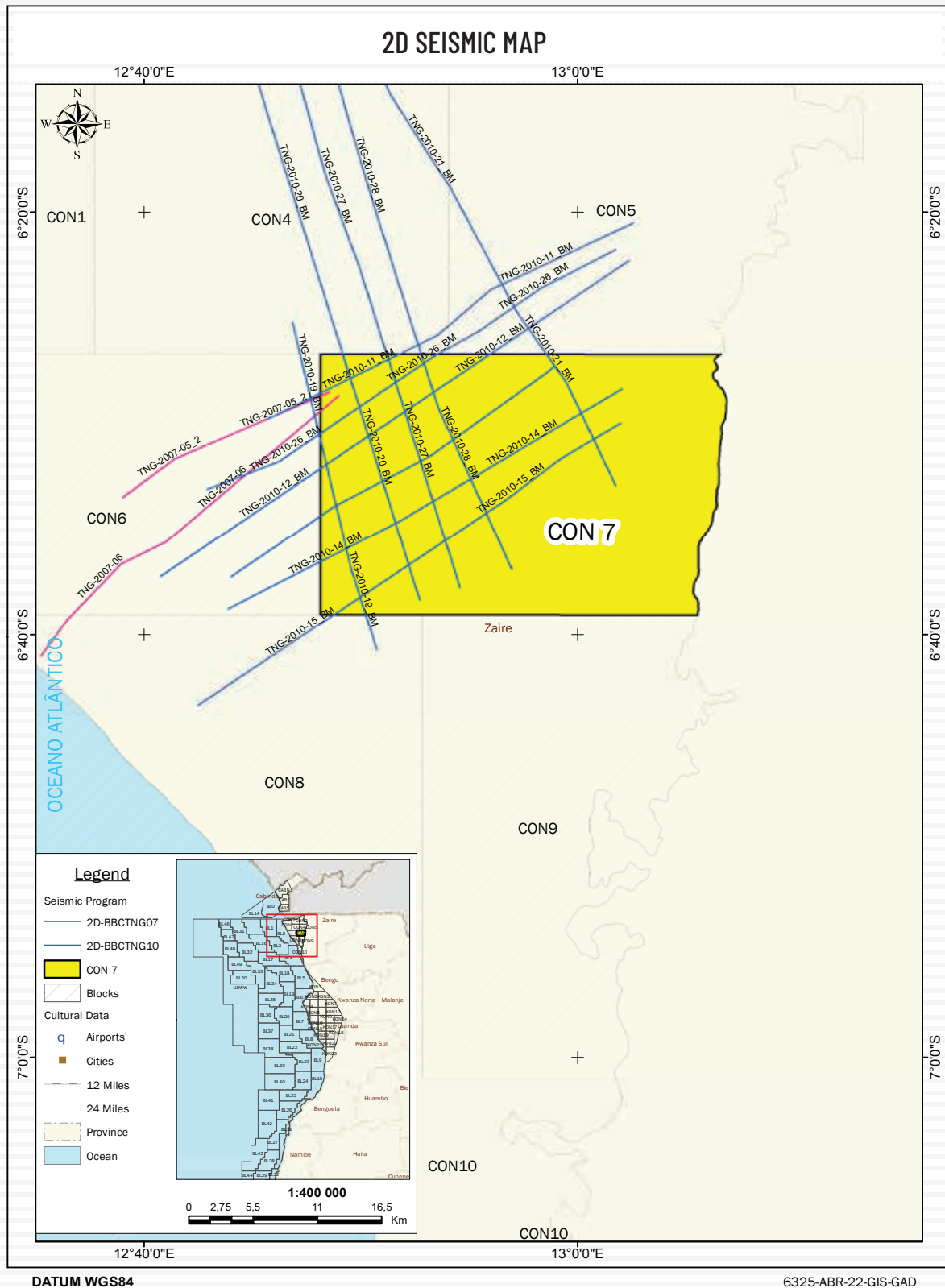


Figure 4: 2D seismic lines, ANPG 2022

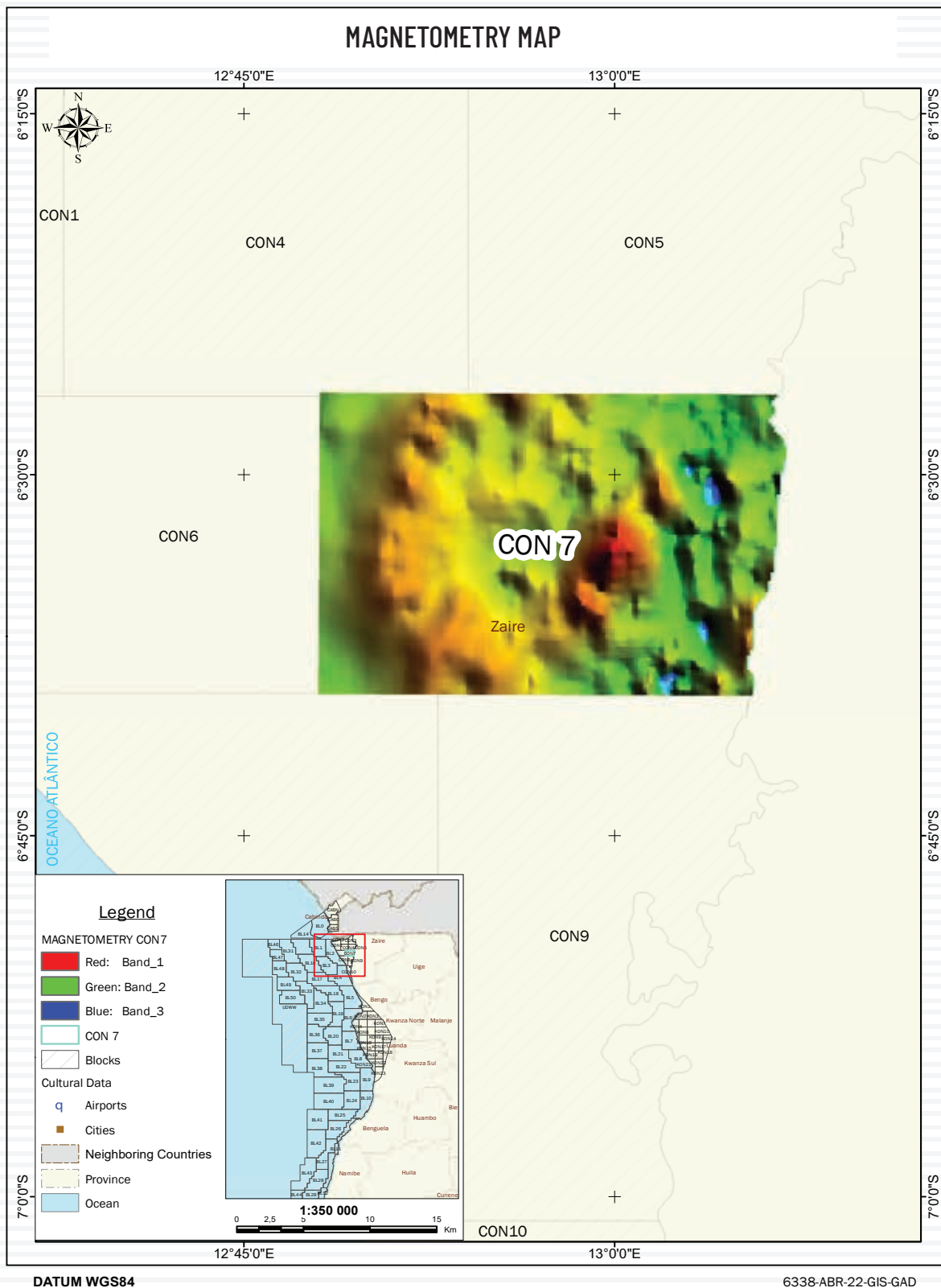


Figure 5: Magnetometry map Block CON 7, ANPG 2022

4. PETROLEUM System

Based on the results of the wells drilled throughout the Basin, it was possible to determine the lithostratigraphy and describe the petroleum system of the two mega-sequences (Pre-salt and Post-salt).

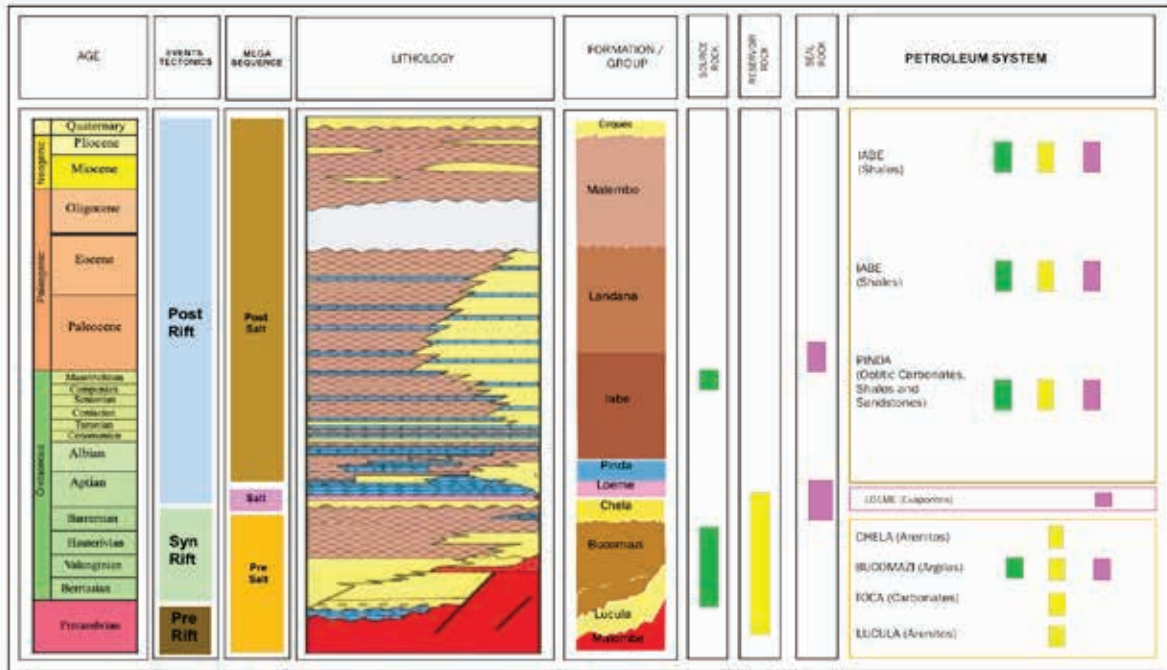


Figure 6: Lithostratigraphic Column of the Onshore Congo Basin, ANPG 2022

4.1 Source Rock

The Block presents great generation potential in its lithostratigraphic units. The organic-rich clays of the Bucomazi Formation in the Pre-salt are the main generating facies in this unit. In the Post-salt, the carbonates with more predominant "calcilutite" clays of the Pinda Formation are the primary source rocks in the Albian, and the organic matter-rich clays of the upper Cretaceous and Eocene in the Iade and Landana Formations are also potential source rocks.

4.2 Reservoir

The sandstones of the Erva Formation in pinch-out form and the Coquina-type carbonates in the Pre-salt present reservoir potential in this lithostratigraphic unit. In addition, oolitic limestones in the raft structure constitute reservoir rock in the Albian.

4.3 Seal

The seal rock in the Pre-salt is formed by the intraformational Shale of the Bucomazi Formation and the Evaporites of the Loeme Formation. In the Post-salt the fine sediments composed of Shale of the Pinda Formation serve as a seal for the reservoirs at this age level.

4.4 Trap

The traps characteristic of the Pre- and Post-salt units are structural, stratigraphic, and combined.

5. EXPLORATION Opportunities

5.1 Identified Leads

The geological and geophysical data acquired, allowed the identification of leads in the Pre-salt as described below.

5.1.1 Pre-salt Leads

Lead 1 & 2

Located to the southwest of the block, with NE-SW direction, characterized by an antiform structure, with reflectors with strong amplitudes discontinuous over the base of the Salt in the Chela Formation. Low amplitude reflectors along the grabens indicate the possible presence of organic-rich sediments with source rock potential.

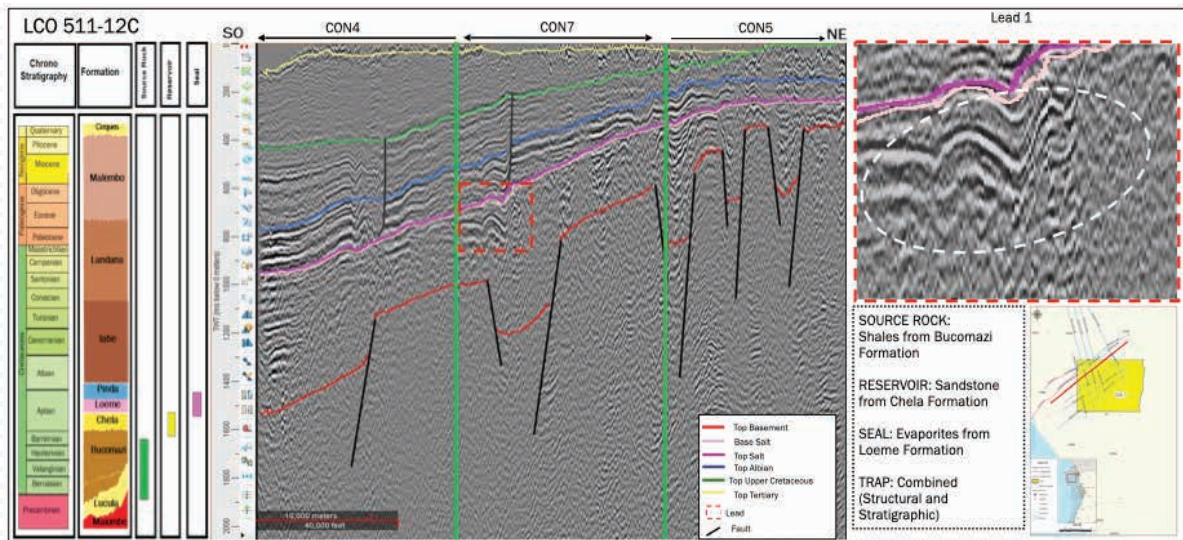


Figure 7: Lead 1, ANPG 2022

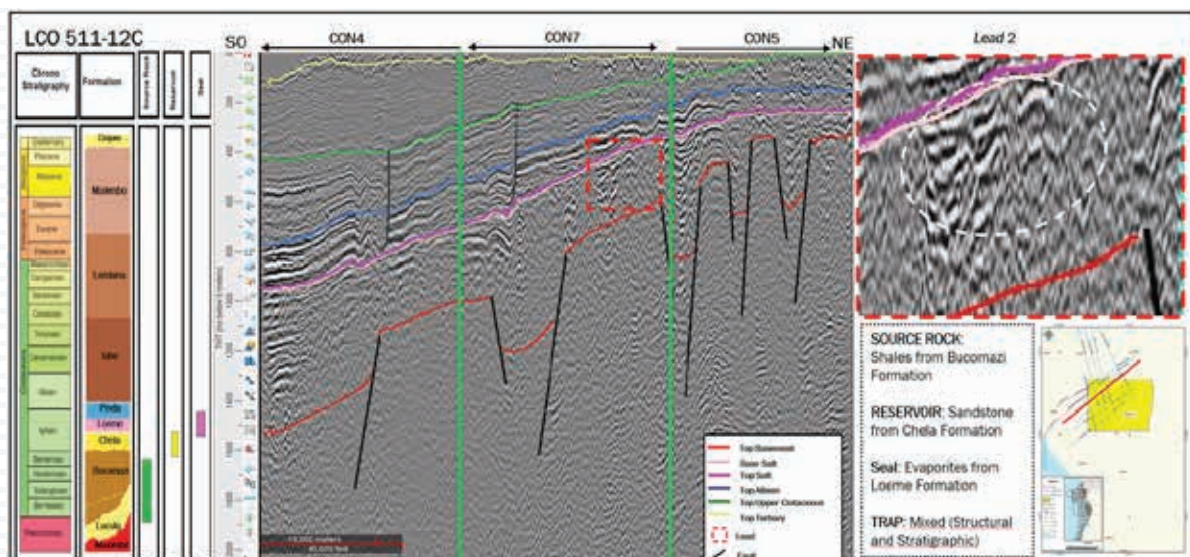


Figure 8: Lead 2, ANPG 2022

Located southwest of the Block, in a structural low of the basement overlain by the Loeme Formation, forming a potential combined trap. The potential reservoir could be the sands of the Chela Formation, fed by the organic-rich shale of the Bucomazi Formation.

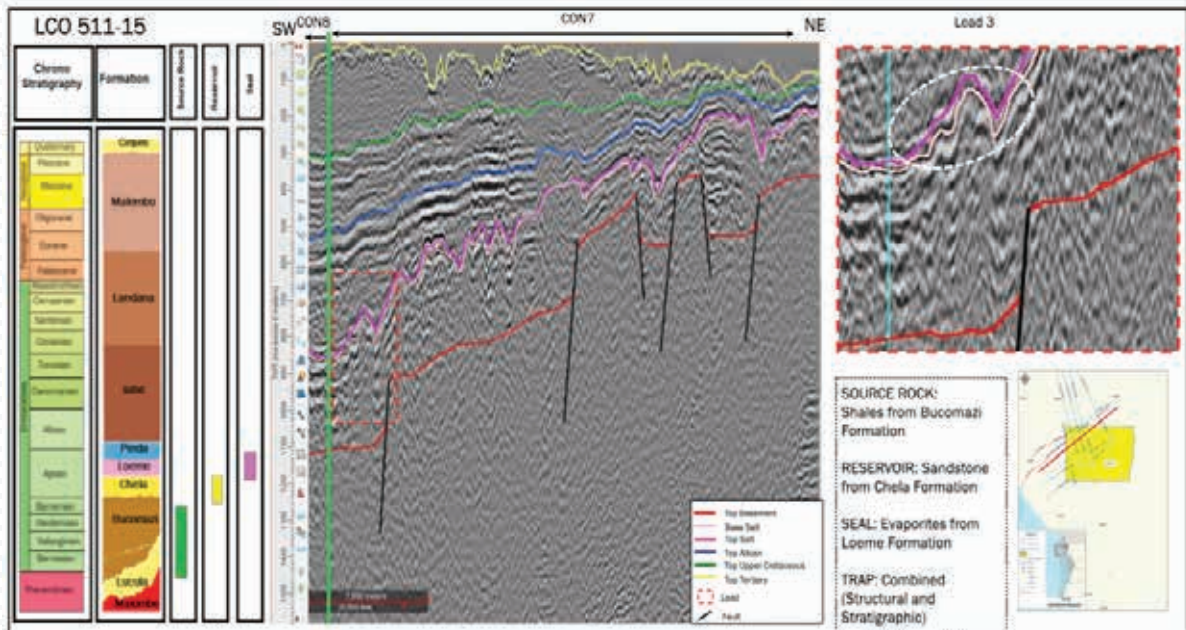


Figure 9: Lead 3, ANPG 2022

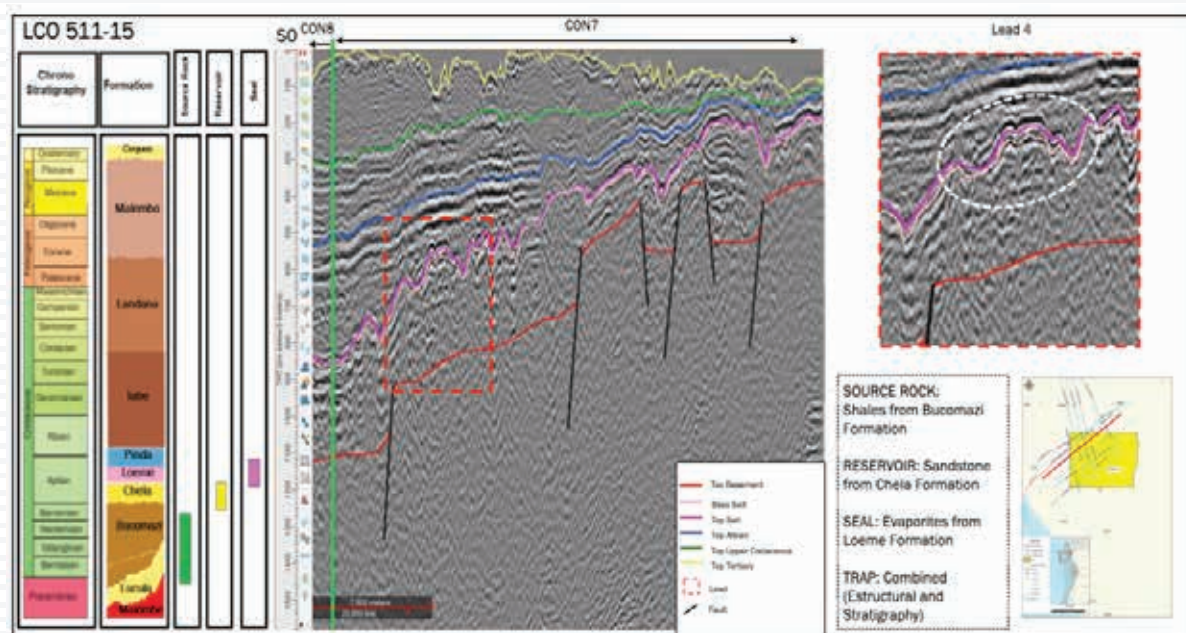


Figure 10: Lead 4, ANPG 2022

6. **FINAL** Remarks

After reassessing Block CON 7, it became evident that the Onshore Lower Congo Basin has a solid potential to be exploited in pre-salt and post-salt plays in a region widely known as having a proven, functional, and active petroleum system.

In the Pre-salt, the primary source rock is the Bucomazi Formation in the lower Congo Basin. The reservoirs are the sands and carbonates of the same formation.

In the post-salt, the Pinda Albian carbonates Formation is the primary source rock, and the carbonates of the same formation are the reservoir rock.

The ANPG encourages the companies to invest in this block through additional studies to ensure the discovery of the real potential, which should allow for the boosting of exploration activity aiming to revert the production decline observed over the last decade.

7. Bibliography

Surface geology report of the area carried out by Argo Petroleum Portuguesa, 1973. Explanatory note of the geological chart at scale 1:1000000

Basin of Angola. Bull. Amer. Assoc. Pet. Geol., 50 (1), pp. 118-158.

BURWOOD, R., 1999. Angola: source rock control for Lower Congo coastal and Kwanza basin petroleum systems, in: Cameron, N. R., Bate R. H. and Clure, V. S. (eds). 'The Oil and Gas Habitats of the South Atlantic'. Geol. Assoc. Spec. Pub. 153, pp. 181-194.

ONSHORE LOWER CONGO BASIN



BLOCK
CON 7



ANGOLA



ANPG
Agência Nacional de Petróleo, Gás e Biocombustíveis
E-mail: licitacao2023@anpg.co.ao
Tel.: +244 226 428 602
website: www.anpg.co.ao

Edifício Torres do Carmo-Torre 2, Rua Lopes Lima, Distrito Urbano da Ingombota,
Município de Luanda, República de Angola