

License Governance in subsurface resources development

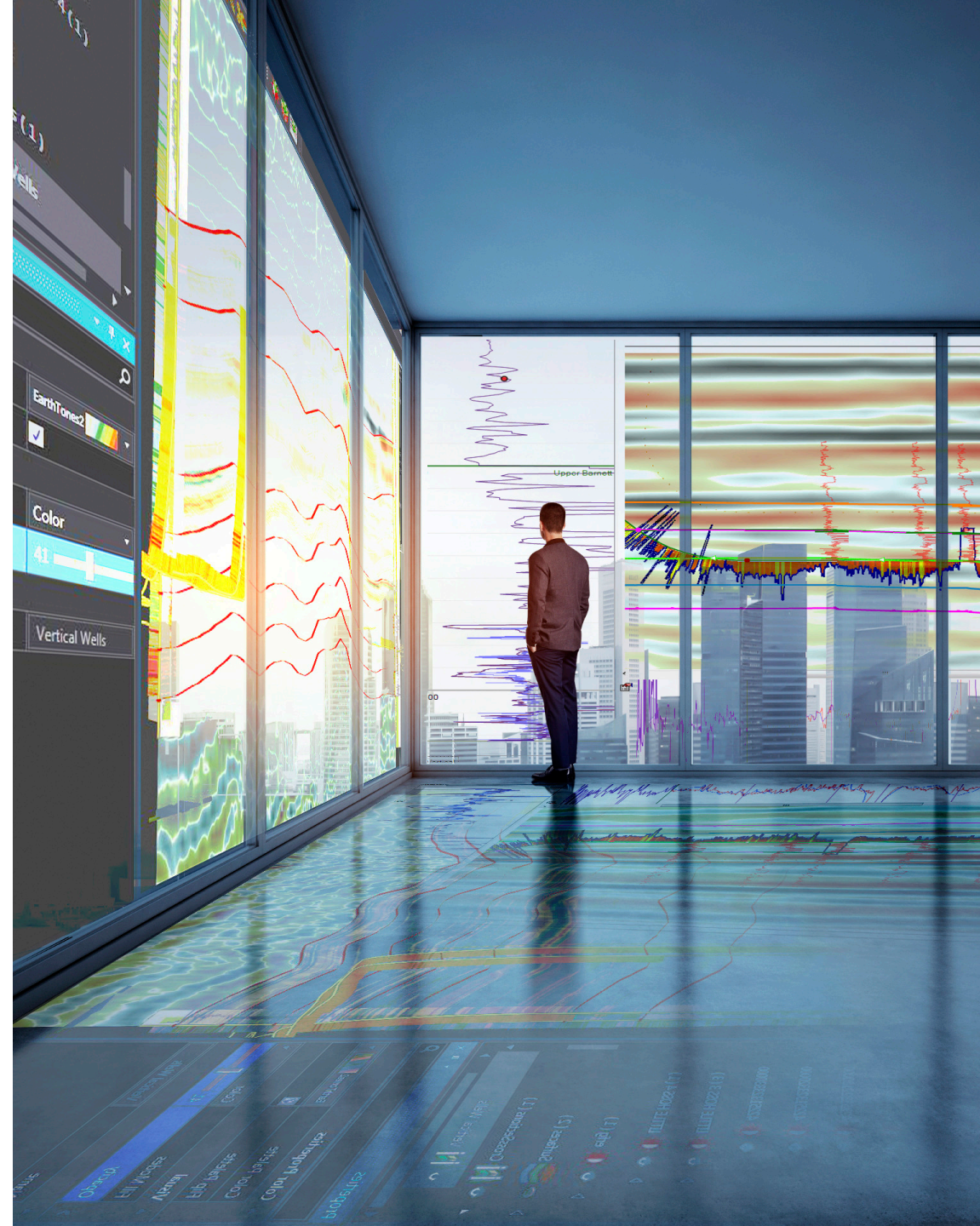


Smart Solutions for Today's Geoscientist

www.lmkr.com

Sikandar Khan
VP EMEA
LMKR

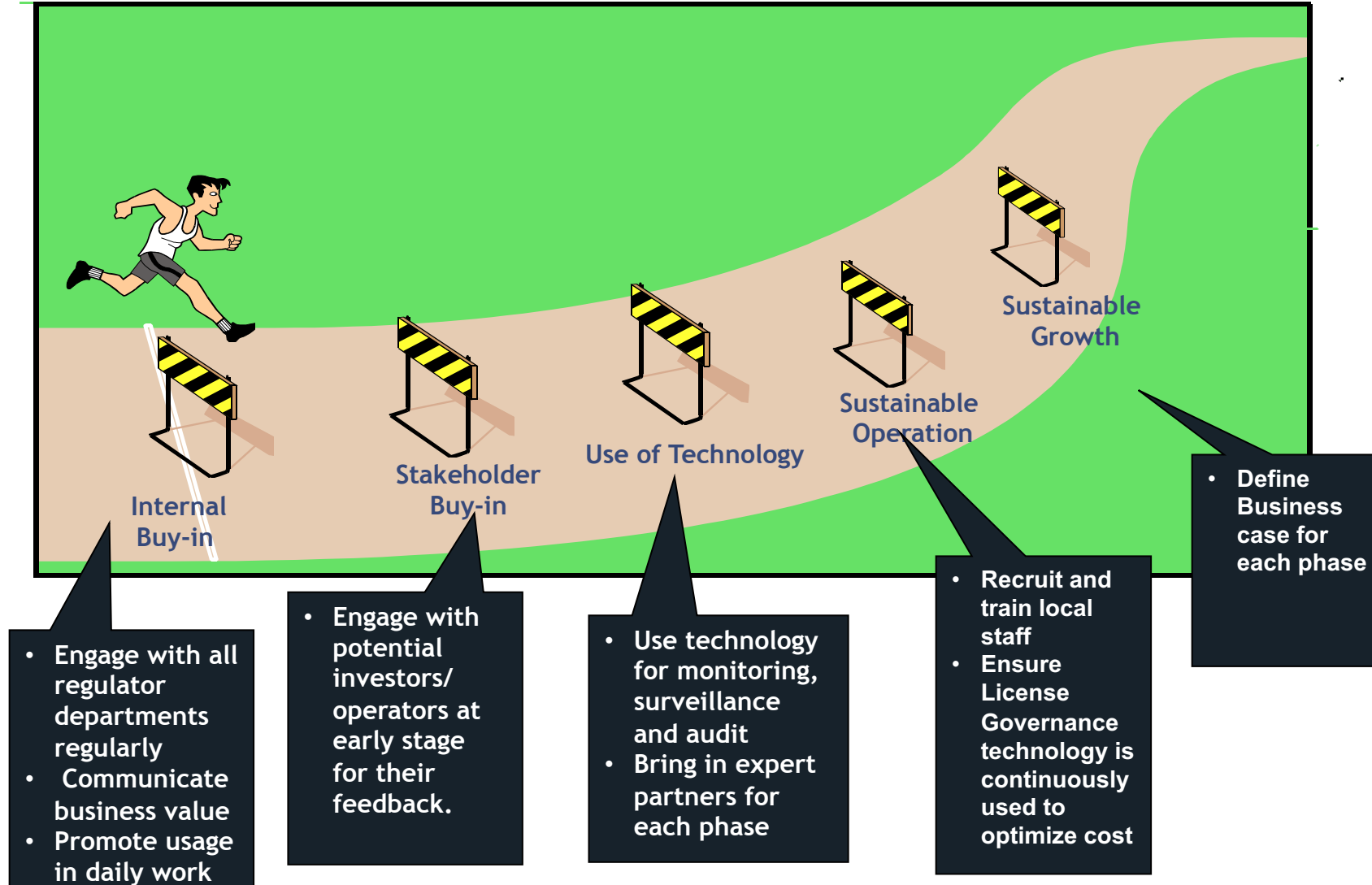
May 2021



We will address

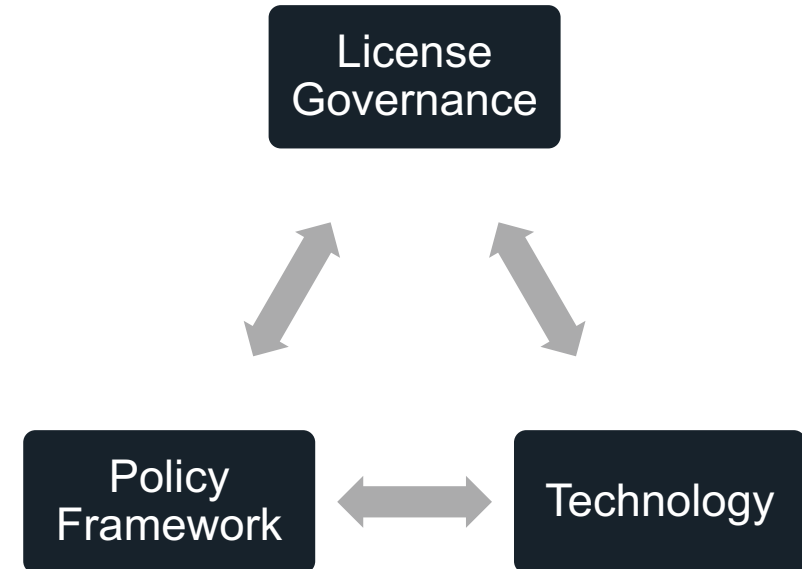
- Key challenges
- License governance framework
- Petroleum Supply Chain
- Concession Life Cycle
- Key Features of License Governance
- Data Based technology – Go Digital
 - E&P Outlook for investors
 - Block Promotion Websites
 - Technical Write Ups
 - Virtual Data Rooms
 - Data Analytics – Exploration Management Technology
 - Data Analytics – Concession Management Technology
 - Data Insights – Specialised studies data (QI, Reservoir Characterization)
 - CSR – Local talent Development
- Value to Governments

Key Challenges



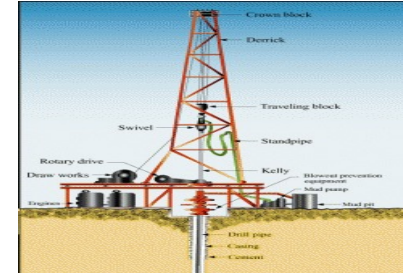
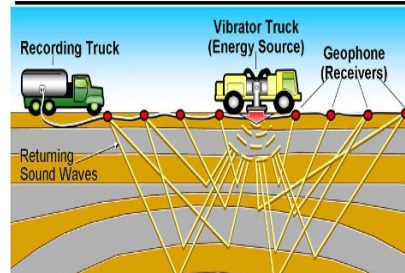
License Governance Framework

- Concession management: principles and policy definition
- Organizational accountabilities, roles and responsibilities
- Standards, Industry best practices
- Processes, events and procedures in the E&P life cycle
- Technology implementation



Petroleum Supply Chain

- Competitive bidding
- Work Program
- PCA
- License



- Discovery
- Appraisal
- Commerciality
- FDP
- D&P Lease

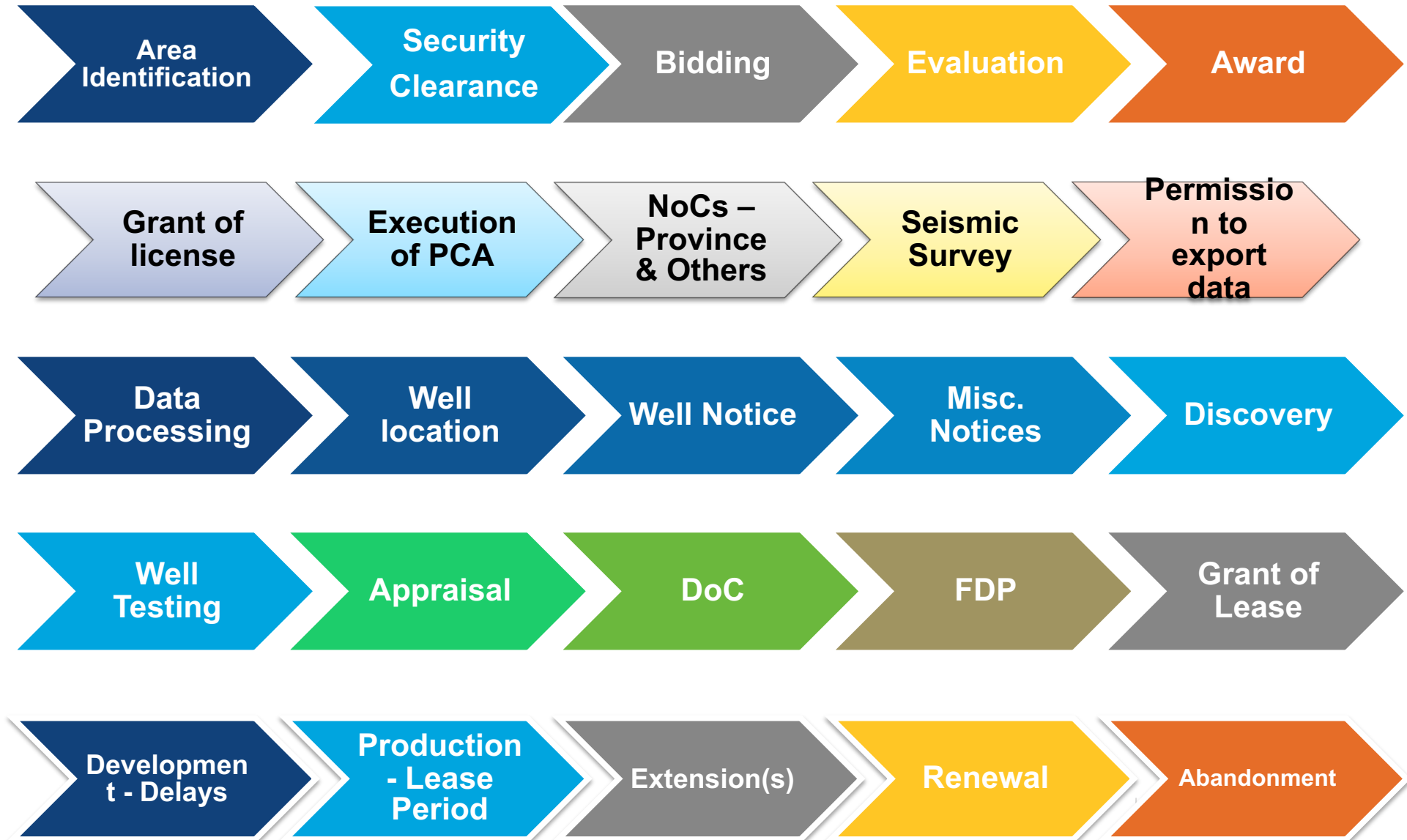
OIL



GAS



Generic Concession Life Cycle



License Governance – Key Features

- Define and enforce Rules
- Define and enforce Standards
- Manage web-based user access by adopting technology
- Plan for growth; FDI



Post Policy/Governance Process

Go Digital

E&P outlook for Potential Investors

- Upstream Activity News
- Applications Details
- Bidding Details
- Exploration License/Lease Granted
- Seismic Acquisition
- Wells Drilling
- Field Wise Production
- Oil & Gas Directory
- Maps (Upstream Activity, Zone Map, Energy Infra-structure Map, Exploratory well Map, Joint Venture Maps)

PPIS Pakistan Petroleum Information Service

SEARCH

ABOUT US NEWS UPSTREAM ACTIVITIES MAPS ARCHIVE SUBSCRIBE GOVERNMENT POLICIES CONTACT US

Pakistan Petroleum Information Service
Instant access to the most up-to-date E&P Information

Drilling initiatives
Authentic industry news

Production statistics
Detailed upstream activity maps

Highlights
Latest regional news, major discoveries, upstream activity news, technological advances and more... [read more](#)

Oil and Gas Directory
Only reliable catalog of all the national and International Oil, Gas, Petrochemical, Power and Energy operators in the region [view](#)

Bids Invited
Prequalification requirements, available blocks, bidding process, rules and regulatory information [read more](#)

Oil & Gas News
Local
Extension of EL
One year extension in phase-I of initial term of... [read more](#)
International
Four oil producing nations agree to freeze output
Oil ministers from three Opec countries, Saudi Arabia, Qatar and Venezuela, as... [read more](#)

Global Access
Access and review E&P data of Pakistan from any location around the world using our secure process. [read more](#)

Oil Prices Worldwide

Spread (B/Oil)	Last	High	Low	Chg.	Chg. %
Brent Oil	54.80	54.71	54.06	+0.33	+0.61%
Crude Oil WTI	48.62	48.77	48.12	+0.39	+0.81%

Weekly Production (04/05/2017 to 04/05/2017)

Oil	Gas	LPG
(BOPD)	(MMCFD)	(M.tons)
84,721	2,816	1,727

Maps
A collection of detailed upstream activity maps of Pakistan [read more](#)

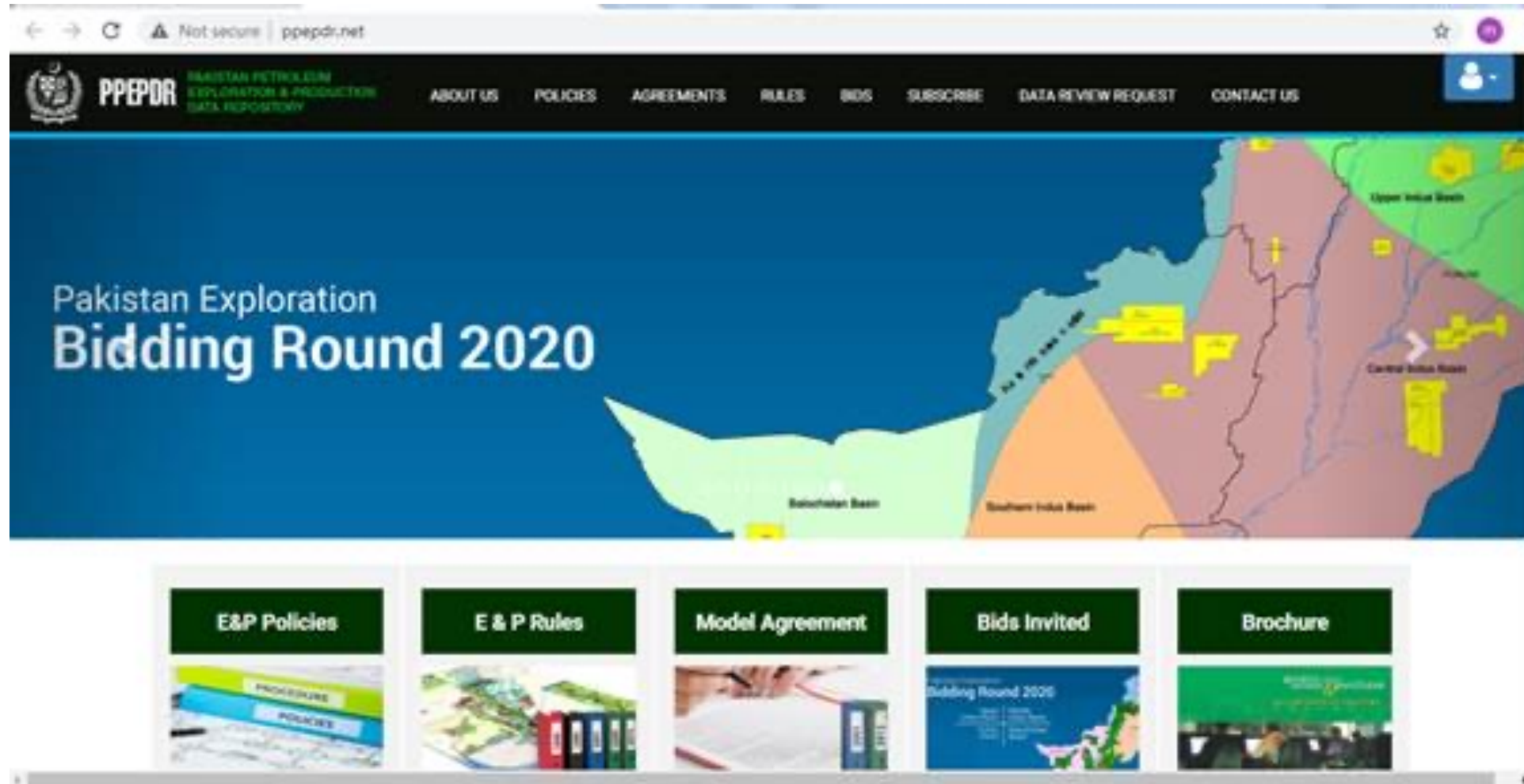
GVERSE E-Store is live!
GVERSE.COM

For Access, Review and Purchase of E&P data of Pakistan
PPEPR Pakistan Petroleum Exploration Data Repository

ABOUT US NEWS UPSTREAM ACTIVITIES MAPS ARCHIVE SUBSCRIBE GOVERNMENT POLICIES CONTACT US

LMKR © 2017 LMR. All rights reserved.

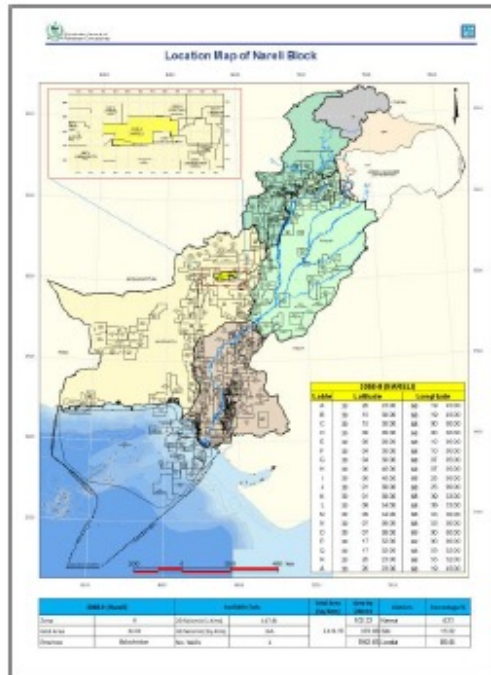
Block Promotion Websites



Technical write-ups For Promotion Of Licensing

Introduction

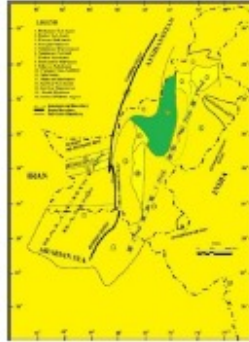
Nareli Block covers an area 2414.95 sq km and is located in Harnai, Sibi and Loralai districts of Balochistan Pakistan. Geologically, it lies in the Central Indus Platform Basin of Pakistan. The block falls in Prospectivity Zone II.



Geology and Tectonics

The Central Indus Platform Basin is divided into Sulaiman fore belt and Sulaiman fore deep. Sulaiman characterizes

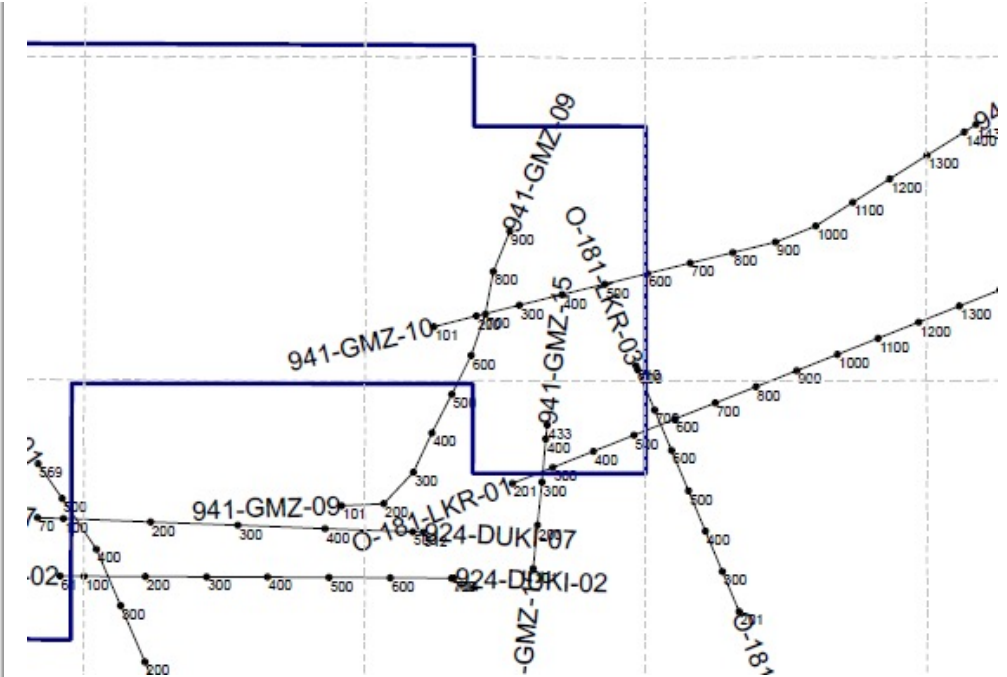
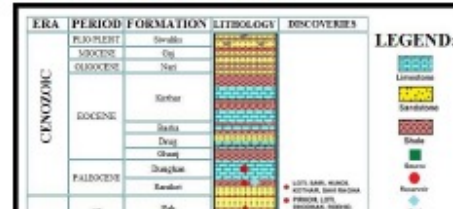
Geological Map (Modified after Ahmed et al, 1994)



Stratigraphic Sequence

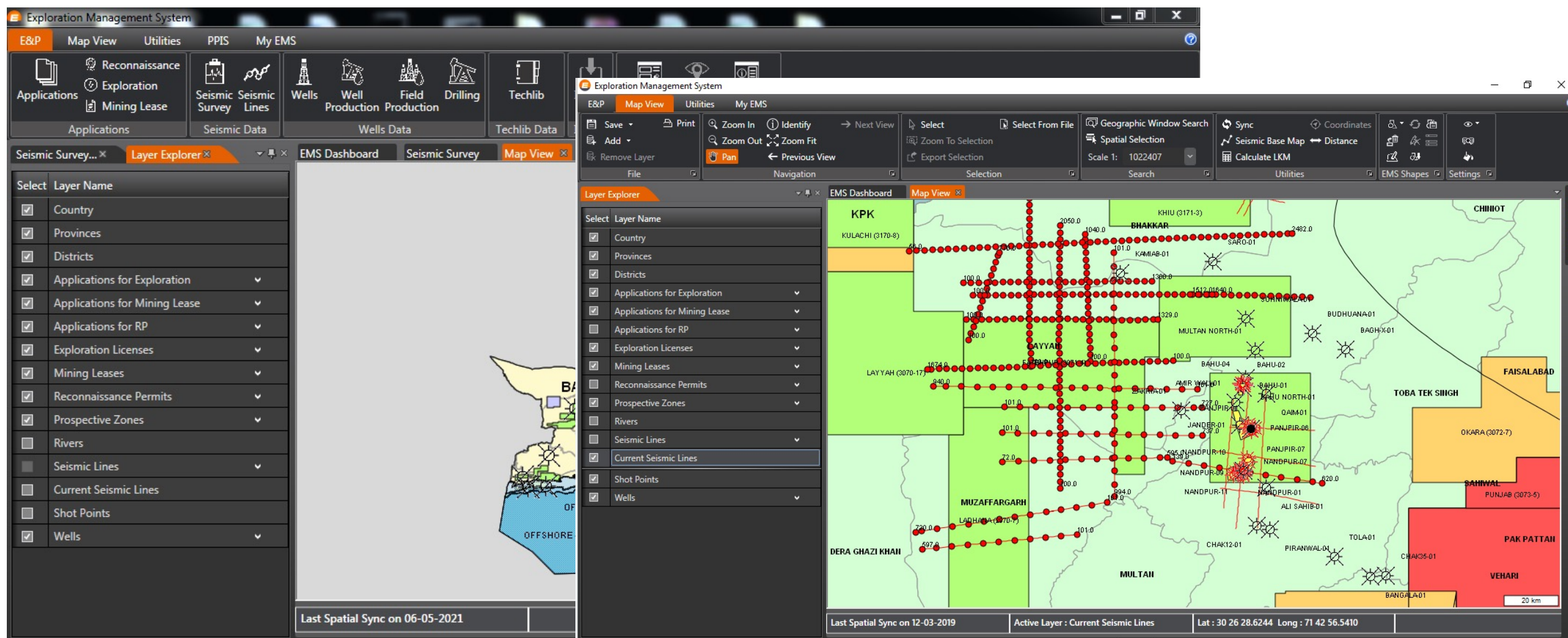
In this block area a thick cover of clastics and carbonates sediments are present, and probably the Cambrian succession is similar to the one that occurs in the Kohat-Potwar fold Belt. In southeast, the succession is younger as compared to northwest direction. In Permian and Jurassic there is a distinct break in the intraformational sediments, while there is regional unconformity in Cretaceous and Tertiary strata. Jurassic rocks are exposed in some parts of the basin because of intense erosion.

Generalized Stratigraphic Chart



Sr. No.	Survey name	Line segment name	3D Seismic Survey
1	MGCL-HAR-2011	HAR11-14	No 3D present.
2	OGDC-DUKI-1992	O-924-DUKI-02	
3	OGDC-DUKI-1992	O-924-DUKI-01	
4	OGDC-DUKI-1992	O-924-DUKI-07	
5	OGDC-GMZ-1994	O-941-GMZ-09	
6	OGDC-GMZ-1994	O-941-GMZ-10	
7	OGDC-GMZ-1994	O-941-GMZ-15	

Virtual Data Review Rooms



Use of Technology - Data Analytics (Exploration)

EMS Dashboard provides insight of E&P Sector with set of interactive charts, tables and reports. The information which is available under EMS dashboard includes concessions, mining leases, applications, seismic navigation and wells.

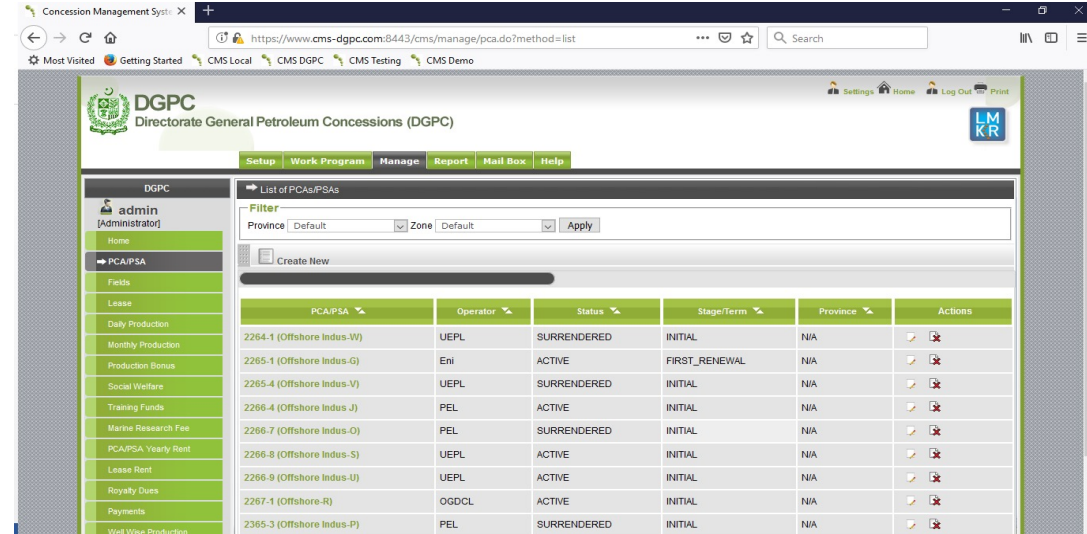
- Well Drilling Status
- Well First Production
- Field & Well Production
- Planned vs Actual Wells
- Planned vs Actual Drilling
- Drilling Curve
- Work program Compliance
- Weekly Drilling Report



Use of Technology - Data Analytics (Concessions)

Exploration and Production activities

- Field wise daily & monthly production
- Well wise production



The screenshot displays the CMS interface for the Directorate General Petroleum Concessions (DGPC). The left sidebar shows a navigation menu with options like Home, PCA/PSA, Fields, Lease, and various production and financial reports. The main content area shows a table of PCA/PSAs with columns for PCA/PSA, Operator, Status, Stage/Term, Province, and Actions. The table lists several entries, including 2264-1 (Offshore Indus-W) and 2265-1 (Offshore Indus-G).

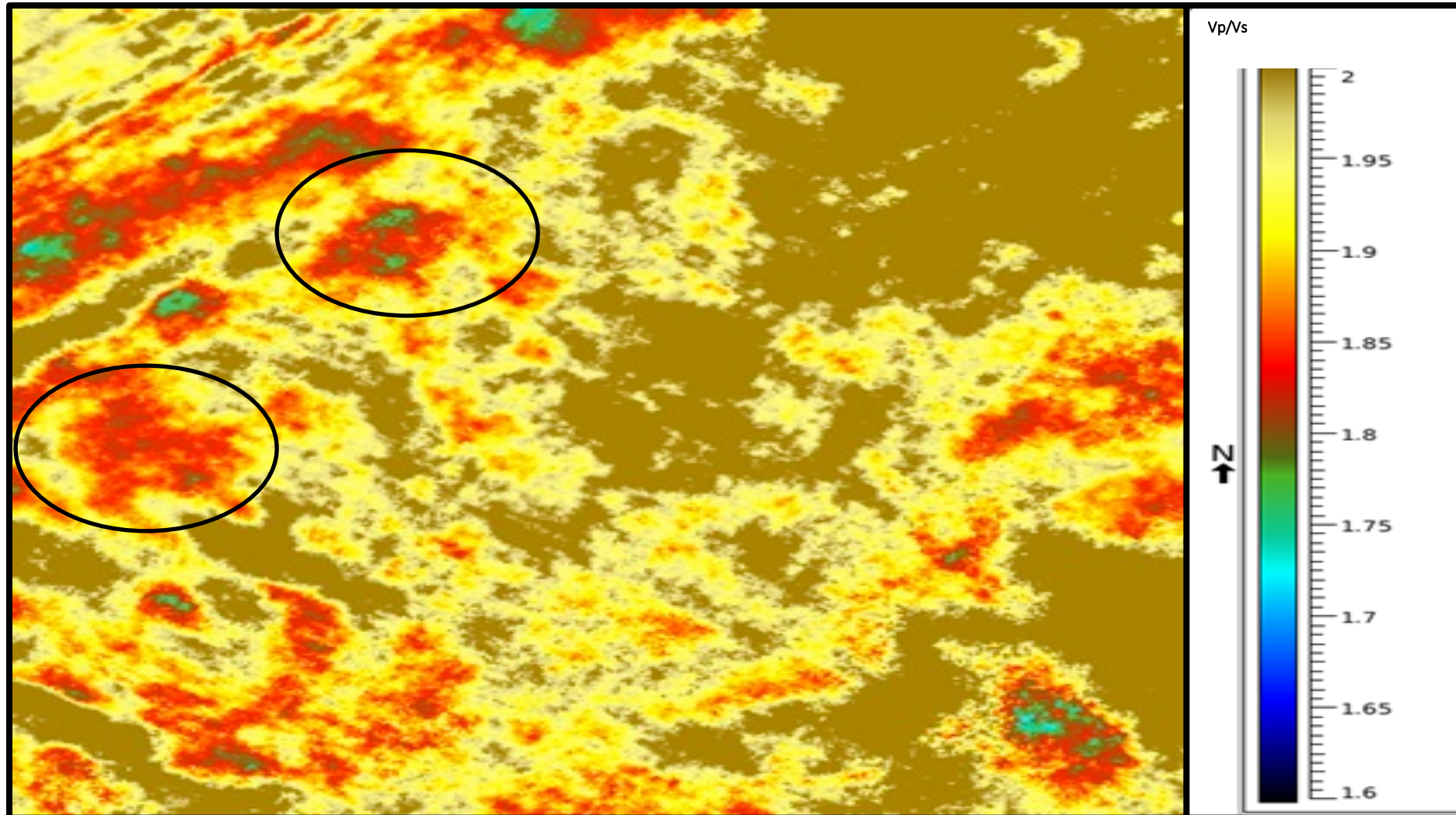
PCA/PSA	Operator	Status	Stage/Term	Province	Actions
2264-1 (Offshore Indus-W)	UEPL	SURRENDERED	INITIAL	NIA	[Icons]
2265-1 (Offshore Indus-G)	Eni	ACTIVE	FIRST_RENEWAL	NIA	[Icons]
2265-4 (Offshore Indus-V)	UEPL	SURRENDERED	INITIAL	NIA	[Icons]
2266-4 (Offshore Indus-J)	PEL	ACTIVE	INITIAL	NIA	[Icons]
2266-7 (Offshore Indus-O)	PEL	SURRENDERED	INITIAL	NIA	[Icons]
2266-8 (Offshore Indus-S)	UEPL	ACTIVE	INITIAL	NIA	[Icons]
2266-9 (Offshore Indus-U)	UEPL	ACTIVE	INITIAL	NIA	[Icons]
2267-1 (Offshore-R)	OGDCL	ACTIVE	INITIAL	NIA	[Icons]
2365-3 (Offshore Indus-P)	PEL	SURRENDERED	INITIAL	NIA	[Icons]

Financial Obligations

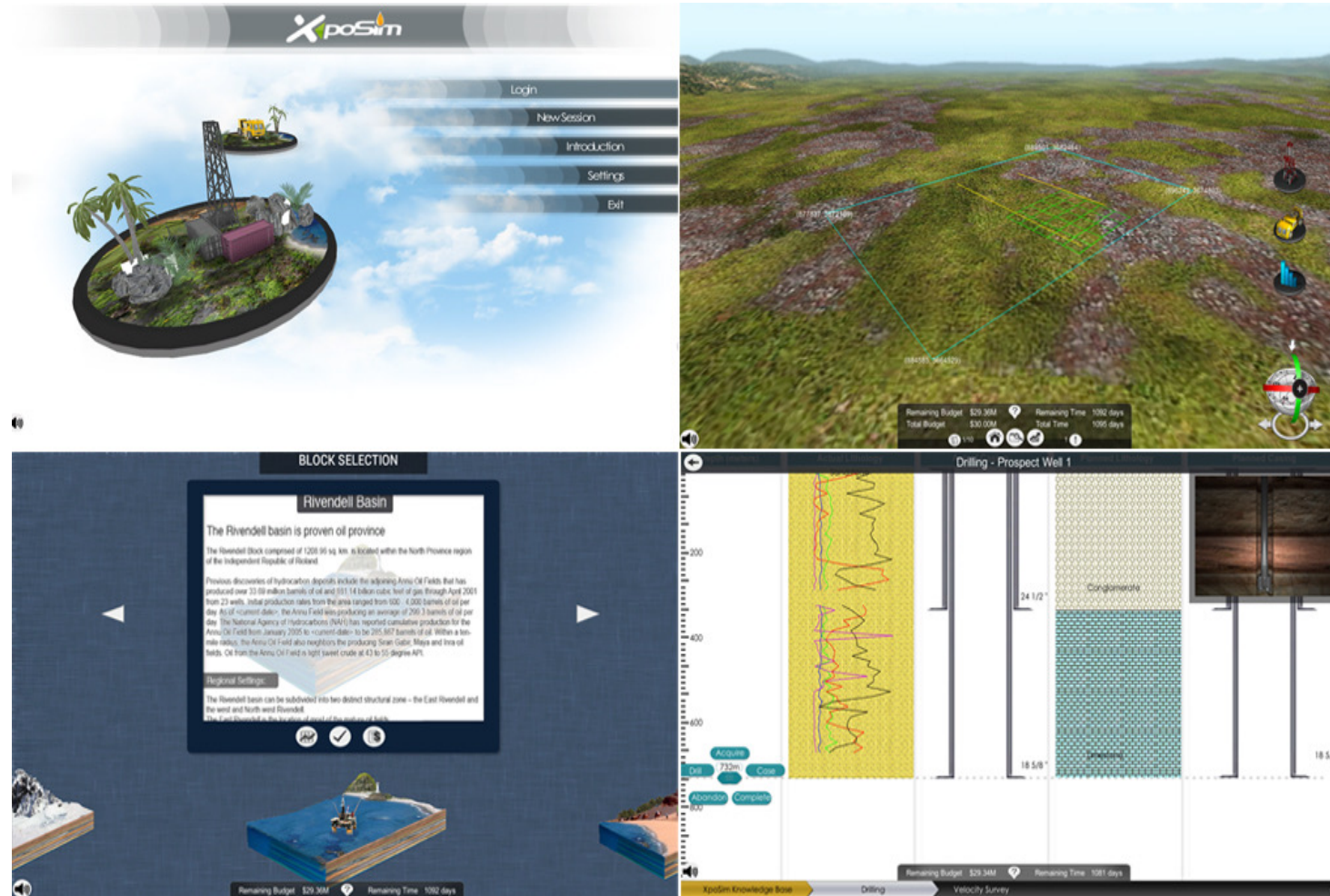
- Rentals
- Training Obligations
- Social Welfare obligations
- Marine Research Fee
- Royalty
- Production Bonus
- Exploration & Production Expenditures



Use of Technology - Data Insights (Advanced Studies)



Use of Technology – Local Talent Development



License Governance - VALUE TO GOVERNMENTS

- e-Governance
- Attract FDI
- Increase exploration activity
- Revenue generation (data trading)
- Online license management



QUESTIONS
