

Schlumberger Real Time Data Solutions

27 May 2021

Waldemar Szemat

Principal Digital Drilling Business Development Manager
Offshore Atlantic Basin

Gustavo Nuñez

Digital Production Engagement Manager
Offshore Atlantic Basin



Schlumberger

The background image shows a row of oil pumpjacks silhouetted against a sunset sky. A large, semi-transparent digital overlay consisting of concentric arcs and glowing lines is positioned on the left side of the image, suggesting a high-tech or data-driven theme.

Real Time Data Solutions: Applied to Drilling

Onsite Real Time Data Aggregation and Monitoring

Capture

Aggregation of QC of
RT drilling data



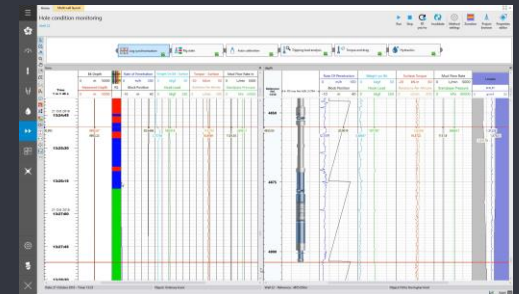
Host, Monitor, Support

Flexible options for hosting
internally and externally

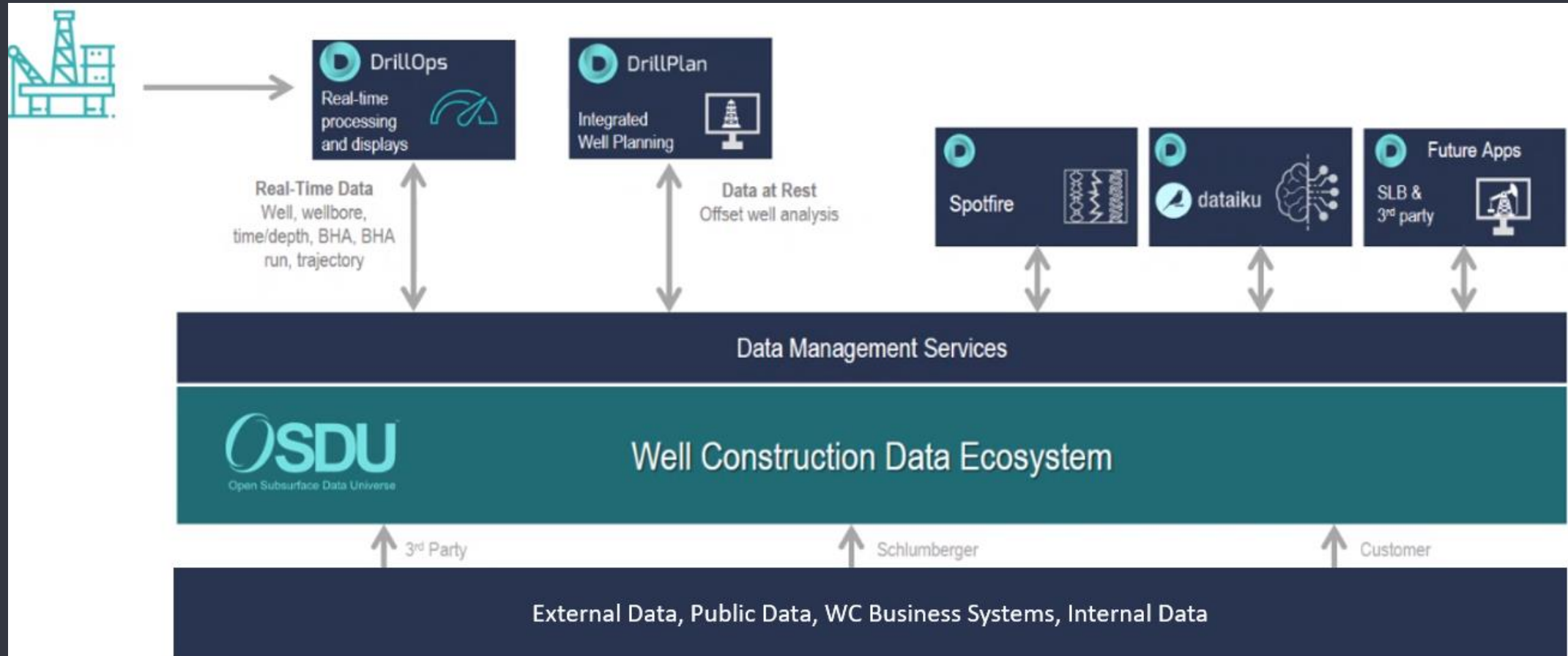


Deliver

Data delivery to the SLB
platform for monitoring
and interpretation



Well Construction Data Foundation



DrillOps Advise

Assure Quality & Compliance

Smart Monitoring



Monitor your entire fleet performance in a single, quality assured dashboard with automated notifications and alerts

Predictive Analytics



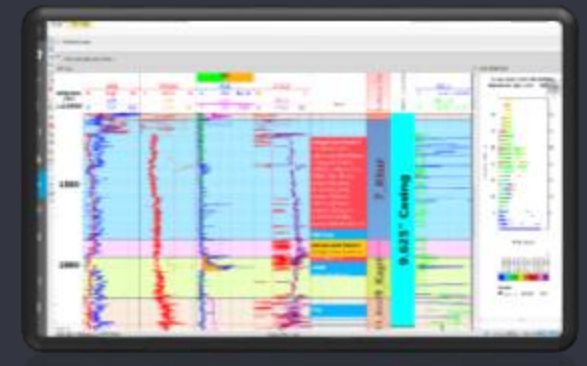
Smart, automated analysis of RT data using the latest machine learning algorithms to identify events ahead of time

Performance Insights



Multi-well drilling performance insights define benchmarks and identify ILT while drilling and manage expectations and risks for future field development

Trends & Events



In-depth analysis and modelling tools for data interpretation and prediction with cross-domain collaboration

Real Time Domain Expertise

Drilling experts to transform your workflows

People & Competencies

Multi discipline domain support
and knowledge sharing hub

Technology & Processes

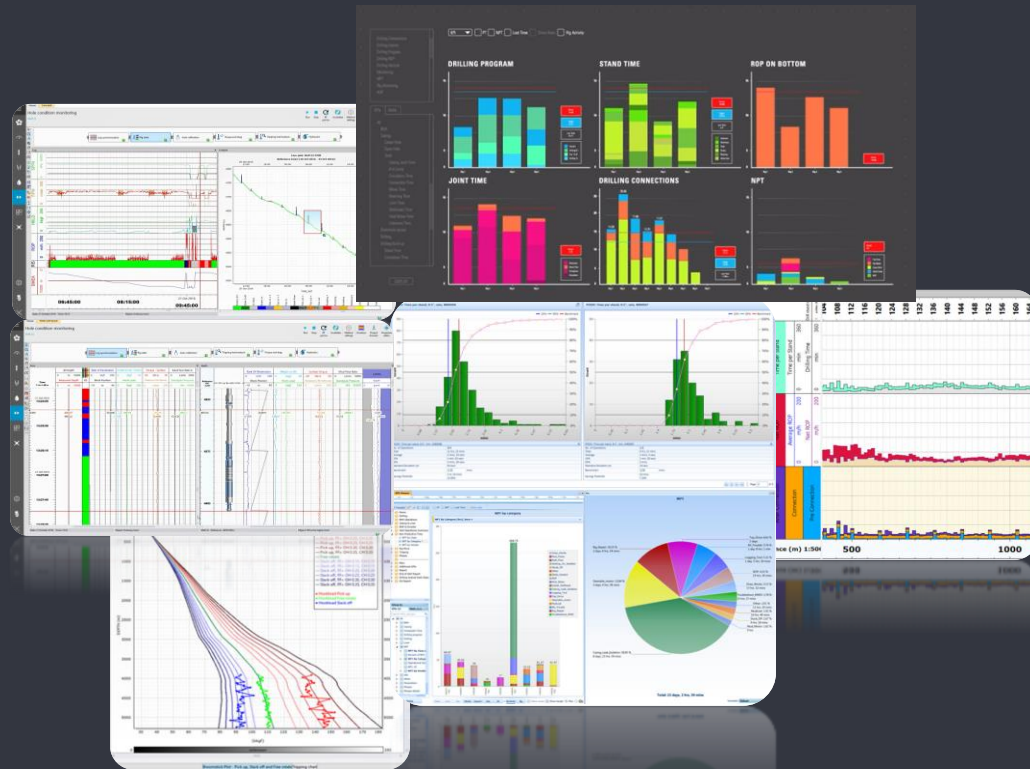
Large suite of services to enhance
performance and hazard management

OptiWell*

Well Construction
Performance
Service

Performance
Management

Hazard
Management



The background image shows a landscape with several oil pumpjacks (jackals) silhouetted against a sunset sky. The scene is overlaid with a complex digital pattern of glowing blue and white lines, suggesting data flow or a network. The lines are curved and intersect, creating a sense of motion and connectivity. The overall color palette is dominated by the blues of the digital overlay and the oranges and yellows of the sunset.

Real Time Data Solutions: Applied to Production

Digital Solution - Attributes

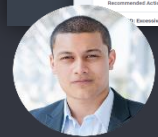
Asset
Managers



Production
Engineers



Surveillance
Engineers



Facilities
Engineers



Field
Operators



Systems
Technicians



Integrated

Streamlined ingestion, integration and orchestration of data and models from industry standard sources



Automated

Combines data-driven and physics-based models for continuous automated insights and value creation



Collaborative

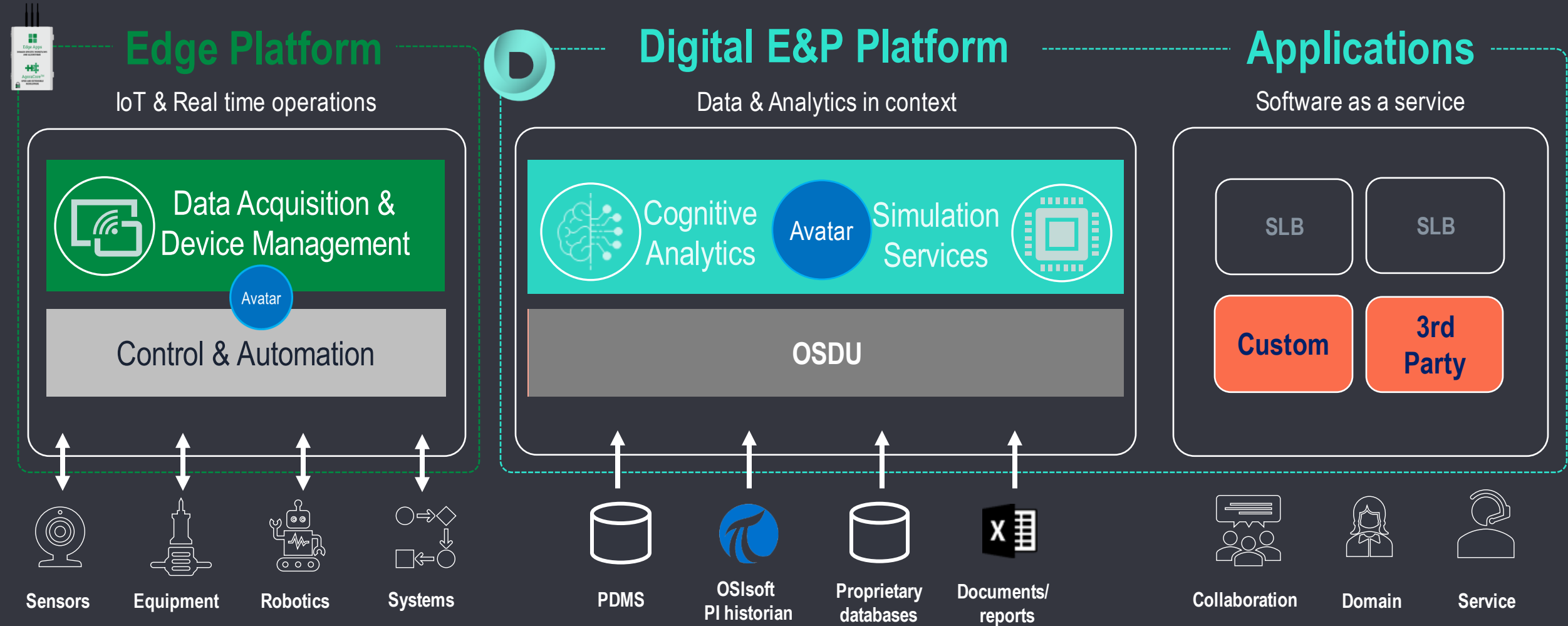
A single environment to review and analyze performance, assign tasks and track activities



Open

An Open data infrastructure to liberate data and workflows, connect systems and differentiate with your own IP

Digital Production Platforms

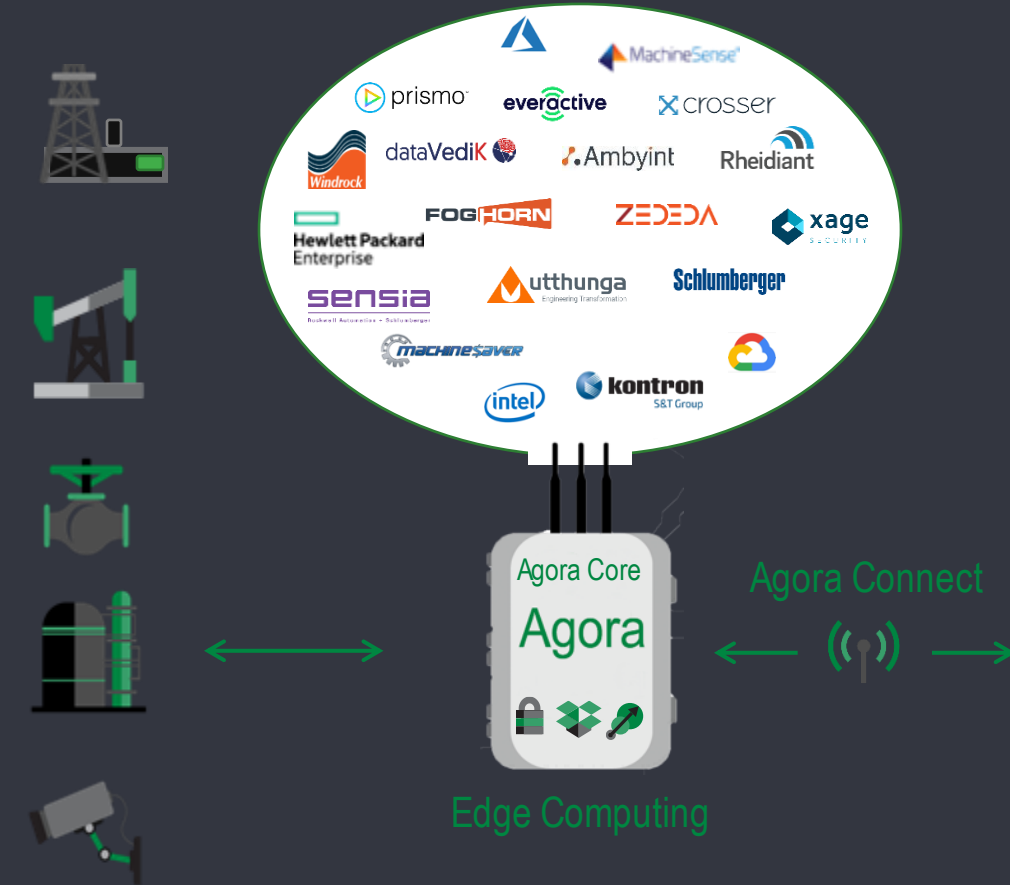


Reservoir – Equipment – Wells – Networks - Facility

Schlumberger

Digital Production Framework – Edge Platform

Connecting all assets with **Agora** Edge Computing



- Partners Apps
- Secure & Scalable
- Open to connect to any device
- Monitoring, Visualization and Control

Agora Marketplace



Hub for Edge Computing Innovation



Change Management

Agora Vision



Real-Time Data Visualization Interface



Intelligence at the edge

Agora Ops



Field Support and 24/7 Operations Center



Advanced Petrotechnical

Agora

Schlumberger

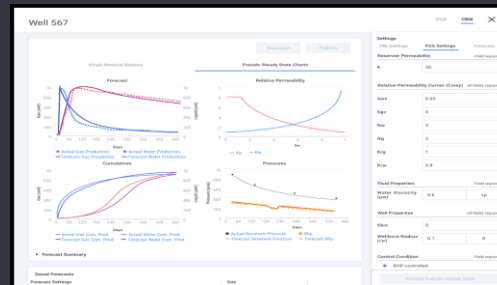
Digital Production Framework – Available Apps

Well Operations



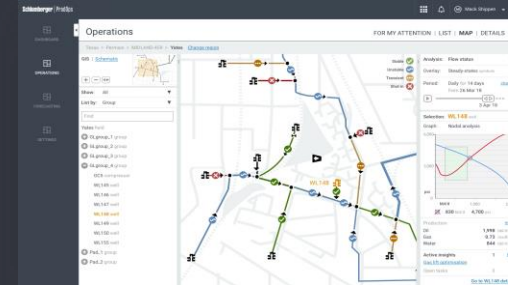
Monitor and proactively identify operational issues with automated Insights

Production Forecasting



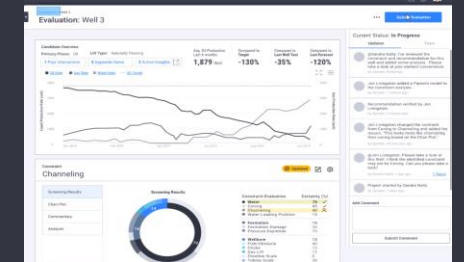
Intelligent automated production forecasting

Network Operations



Immediate guidance for better field-scale production management decisions

Well Portfolio Optimization



Automated rapid screening and ranking of workover candidates

Shared Components

Data Services

Enriches the Data Ecosystem with on-prem and cloud-based agents based on an extensible ingestion framework

Domain Model

Extensible model for raw and virtual data. Integrates data for end-user workflows

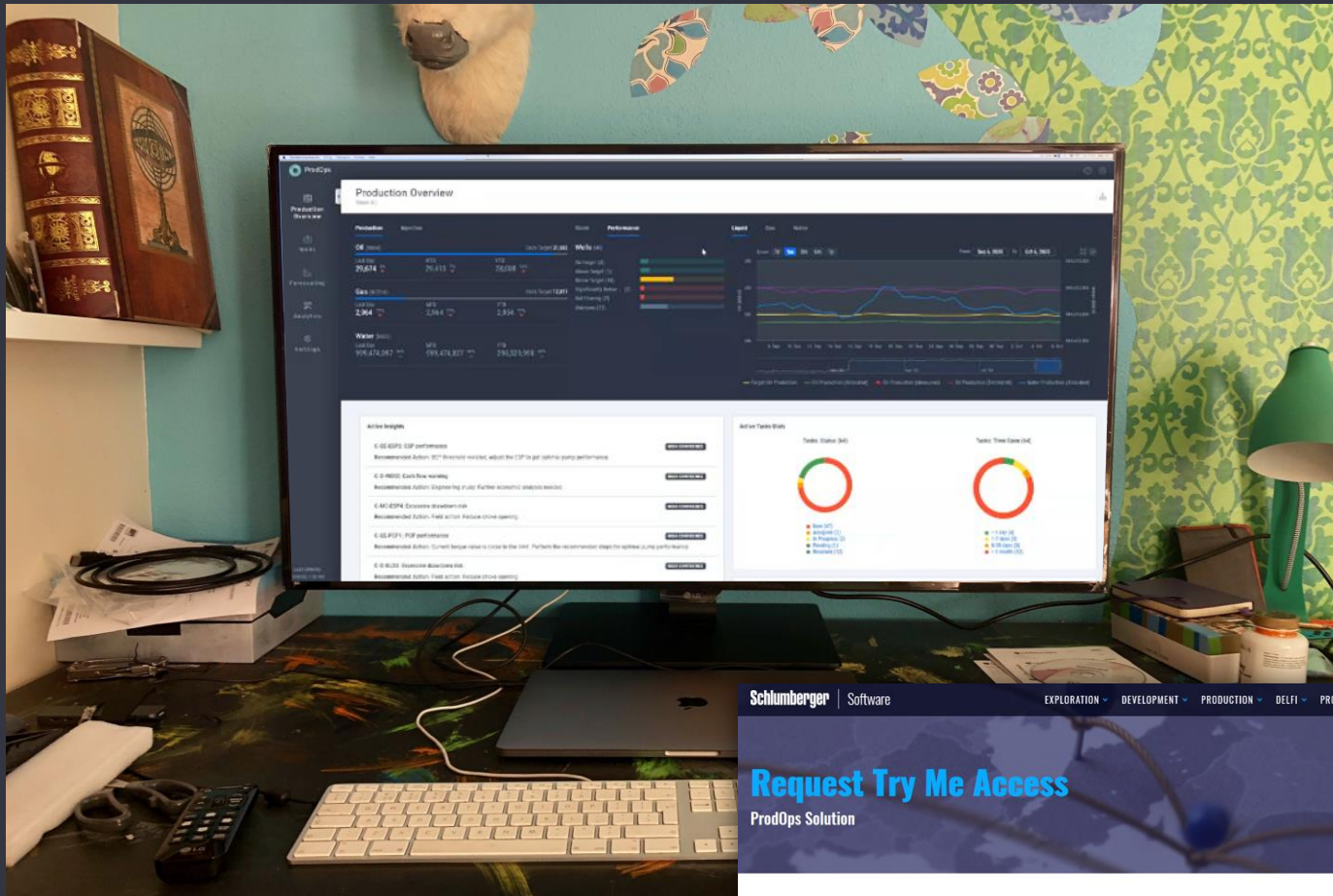
Workflow Services

Aggregates, orchestrates logic, integrates data analytics and models

Common Components

Includes MapLarge, Spotfire, Task Management, Entity Grouping & Delivery Infrastructure

ProdOps Try Me



Live, hands-on evaluation for customers at no charge

- Synthetic dataset
- 7 days access – can be extended on request


Try Me access request form [here](#)
or email request email:
prodopsinfo@slb.com

Schlumberger | Software

EXPLORATION | DEVELOPMENT | PRODUCTION | DELFI | PRODUCTS

Request Try Me Access

ProdOps Solution

 **With Try Me access,** you can use the ProdOps solution in a demonstration environment for a limited time. We've included a synthetic dataset, so you can test our tuned production operations solution just like you were using it for real.

To gain access, please complete the form and confirm your acceptance of the terms and conditions. Once we've reviewed your request, we will contact you with further details.

Access to the ProdOps Try Me environment is granted for seven calendar days after access details have been provided. This period may be extended upon request.

Note: The ProdOps solution is based around workflows and activities performed by an operating company and access to the ProdOps Try Me environment is intended for operating company employees only. If you do not work for an operating company, please describe in detail the purpose for your access request in the comments box below.

For any enquiries relating to the ProdOps solution, including the Try Me environment, please contact prodopsinfo@slb.com

Thank you for your attention!

DELFI, DrillOps, DrillPlan, ExplorePlan, FDPlan, GAIA, ProdOps is a mark of Schlumberger / are marks of Schlumberger.

Drillbench, ECLIPSE, GeoX, GPM, IAM, InnerLogix, INTERSECT, Malcom, MEPO, Merak, Ocean, OFM, OLGA, Omega, Petrel, PetroMod, PIPESIM, ProSource, Studio, Symmetry, Techlog, VISAGE is a mark of Schlumberger / are marks of Schlumberger.

© 2021 Schlumberger. All rights reserved.

Other company, product, and service names are the properties of their respective owners.