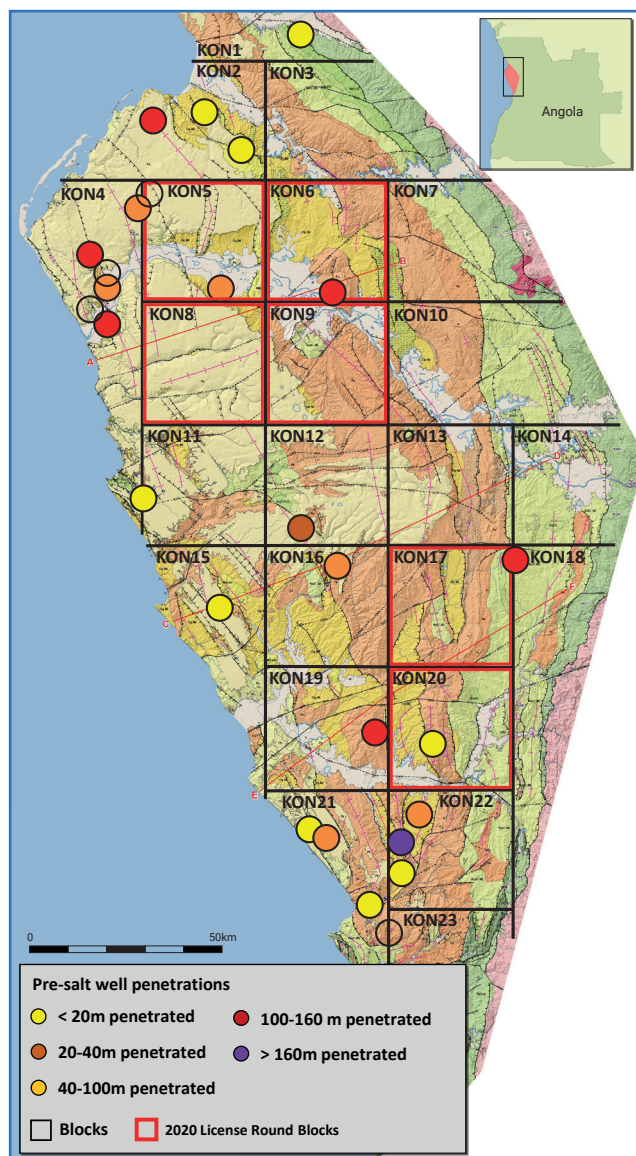


KMAP-2020

trois-geo.com
deltagroupnk.com

Updated Geological Map & Database of Onshore Kwanza Basin



TROIS Geoconsulting & DDMS, in partnership with ANPG, are pleased to offer an integrated Geological Report and ArcGIS Project for the Onshore Kwanza Basin, Angola.

KMAP-2020 compiles available past and recent studies:

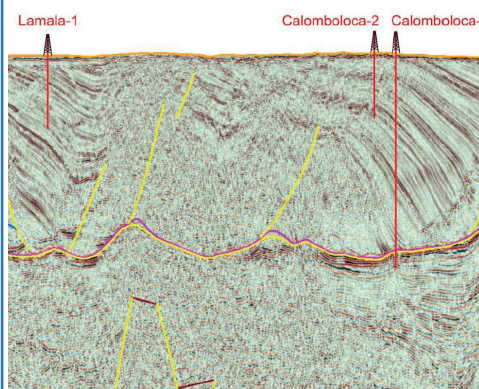
- Material from previous License Round promotions (2013-2014).
- Sonangol commissioned study to assess the remaining potential of the basin (2015).
- Recent fieldwork outcrop information, petrographic studies and paleontological reports.
- Modern satellite imagery and interpretations - Landsat imagery, SRTM DEM, ASTER and PALSAR Radar data (2020).

The whole onshore basin has now been remapped at a more comprehensive 1:50,000 scale involving interpretation at 1:25,000 scale. Lithological details from outcrop and petrographic studies from 3,000 field sample points have also been honoured by the study.

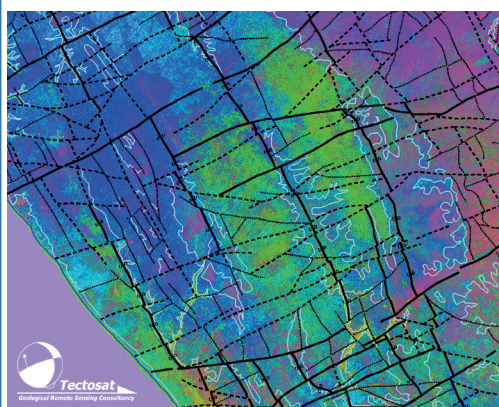
KMAP-2020 is available for individual blocks or for the entire basin. Deliverables include:

Block and Basin Reports	New Geological Maps	Satellite Imagery
Paleontological Reports	Outcrop Field Studies	Petrographic Reports
Well Correlation Panels	Geo-Cross Sections	Seismic Profile Images

Seismic Profiles & Well Correlation Panels



Enhanced Geological & Structural Interpretations



Detailed Outcrop & Sample Information



For more information contact:

✉ alessandro.colla@trois-geo.com
✉ noumouke.kaba@deltagroupnk.

