

# ANGOLA MAPA DE CONCESSÕES

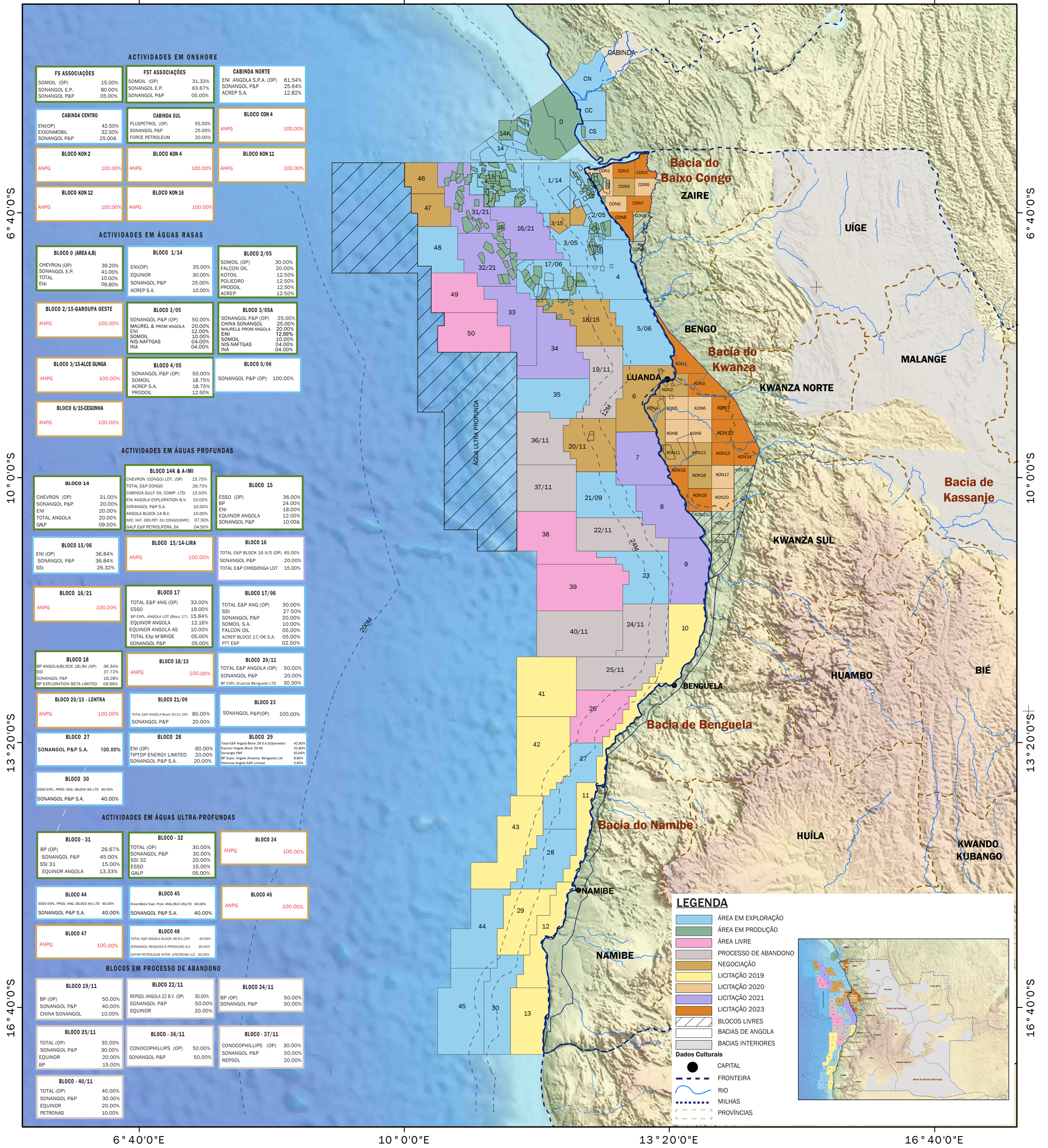


6° 40'0"E

10° 0'0"E

13° 20'0"E

16° 40'0"E



### ATIVIDADES EM ONSHORE

FS ASSOCIAÇÕES		FST ASSOCIAÇÕES		CABINDA NORTE	
SOMOIL (OP)	15.00%	SOMOIL (OP)	31.33%	ENI ANGOLA S.P.A. (OP)	61.54%
SONANGOL E.P.	80.00%	SONANGOL E.P.	63.67%	SONANGOL P&P	25.64%
SONANGOL P&P	05.00%	SONANGOL P&P	05.00%	ACREP S.A.	12.82%

CABINDA CENTRO		CABINDA SUL		BLOCO CON 4	
ENI(OP)	42.50%	PLUSPETROL (OP)	55.00%	ANPG	100.00%
EXXONMOBIL	32.50%	SONANGOL P&P	25.00%		
SONANGOL P&P	25.00%	FORCE PETROLEUM	20.00%		

BLOCO KON 2		BLOCO KON 4		BLOCO KON 11	
ANPG	100.00%	ANPG	100.00%	ANPG	100.00%

BLOCO KON 12		BLOCO KON 16	
ANPG	100.00%	ANPG	100.00%

### ATIVIDADES EM ÁGUAS RASAS

BLOCO 0 (AREA A)		BLOCO 1/14		BLOCO 2/05	
CHEVRON (OP)	39.20%	ENI(OP)	35.00%	SOMOIL (OP)	30.00%
SONANGOL P&P	41.00%	EQUINOR	30.00%	FALCON OIL	20.00%
TOTAL	10.00%	SONANGOL P&P	25.00%	KOTIL	12.50%
ENI	09.80%	ACREP S.A.	10.00%	POLIEDRO	12.50%
				PRODOIL	12.50%
				ACREP	12.50%

BLOCO 2/15-GAROUPA OESTE		BLOCO 3/05		BLOCO 3/05A	
ANPG	100.00%	SONANGOL P&P (OP)	50.00%	SONANGOL P&P (OP)	25.00%
		MAUREL & PROM ANGOLA	20.00%	CHINA SONANGOL	25.00%
		ENI	12.00%	MAUREL & PROM ANGOLA	20.00%
		SOMOIL	10.00%	ENI	12.00%
		NIS-NAFTGAS	04.00%	SOMOIL	10.00%
		INA	04.00%	NIS-NAFTGAS	04.00%
				INA	04.00%

BLOCO 3/15-ALCE GUNGA		BLOCO 4/05		BLOCO 5/06	
ANPG	100.00%	SONANGOL P&P (OP)	50.00%	SONANGOL P&P (OP)	100.00%
		SOMOIL	18.75%		
		ACREP S.A.	18.75%		
		PRODOIL	12.50%		

BLOCO 6/15-CEGONHA	
ANPG	100.00%

### ATIVIDADES EM ÁGUAS PROFUNDAS

BLOCO 14		BLOCO 14K & A-IMI		BLOCO 15	
CHEVRON (OP)	31.00%	CHEVRON (CONGO) LTD. (OP)	15.75%	ESSO (OP)	36.00%
SONANGOL P&P	20.00%	TOTAL E&P CONGO	26.75%	SSI	24.00%
ENI	20.00%	CABINDA GULF OIL COMP. LTD.	15.50%	ENI ANGOLA EXPLORATION B.V.	10.00%
TOTAL ANGOLA	20.00%	ENI ANGOLA EXPLORATION B.V.	10.00%	SONANGOL P&P S.A.	10.00%
G&P	09.00%	ANGOLA BLOCK 14 B.V.	10.00%	ENI	18.00%
		SOC. NAT. DES PET. DU CONGO(SNCP)	07.50%	EQUINOR ANGOLA	12.00%
		G&P E&P PETROLIFERA, SA	04.50%	FALCON OIL	05.00%
				ACREP BLOCO 17/06 S.A.	05.00%
				PIT E&P	02.50%

BLOCO 15/06		BLOCO 15/14-LIRA		BLOCO 16	
ENI (OP)	36.84%	ANPG	100.00%	TOTAL E&P BLOCK 16 A/S (OP)	65.00%
SONANGOL P&P	36.84%			SONANGOL P&P	20.00%
SSI	26.32%			TOTAL E&P CHISSONGA LTD	15.00%

BLOCO 16/21		BLOCO 17		BLOCO 17/06	
ANPG	100.00%	TOTAL E&P ANG (OP)	33.00%	TOTAL E&P ANG (OP)	30.00%
		ESSO	19.00%	SSI	27.50%
		BP EXPL. ANGOLA LTD (BLOCO 17)	15.84%	SONANGOL P&P	20.00%
		EQUINOR ANGOLA	12.16%	SOMOIL S.A.	10.00%
		EQUINOR ANGOLA AS	10.00%	FALCON OIL	05.00%
		TOTAL EXP M'BRIDE	05.00%	ACREP BLOCO 17/06 S.A.	05.00%
		SONANGOL P&P	05.00%	PIT E&P	02.50%

BLOCO 18		BLOCO 18/15		BLOCO 20/11	
BP ANGOLA(BLOCK 18) BV (OP)	36.34%	ANPG	100.00%	TOTAL E&P ANGOLA (OP)	50.00%
SSI	37.72%			SONANGOL P&P	20.00%
SONANGOL P&P	16.28%			BP EXPL.(Kwanza Benguela) LTD	30.00%
BP EXPLORATION BETA LIMITED	09.66%				

BLOCO 20/15 - LONTRA		BLOCO 21/09		BLOCO 23	
ANPG	100.00%	TOTAL E&P ANGOLA Block 20-21 (OP)	80.00%	SONANGOL P&P(OP)	100.00%
		SONANGOL P&P	20.00%		

BLOCO 27		BLOCO 28		BLOCO 29	
SONANGOL P&P S.A.	100.00%	ENI (OP)	60.00%	TOTAL E&P Angola Block 29 S.A.S(Operator)	42.00%
		TIPTOP ENERGY LIMITED	20.00%	EQUINOR Angola Block 29 S.A.S	22.00%
		SONANGOL P&P S.A.	20.00%	Sonangi P&P	20.00%
				BP Equinor Angola (Kwanza Benguela) Ltd	8.00%
				Petronas Angola E&P Limited	5.00%

BLOCO 30	
ESSO EXPL. PROD. ANG. (BLOCO 30) LTD	60.00%
SONANGOL P&P S.A.	40.00%

### ATIVIDADES EM ÁGUAS ULTRA-PROFUNDAS

BLOCO - 31		BLOCO - 32		BLOCO 34	
BP (OP)	26.67%	TOTAL (OP)	30.00%	ANPG	100.00%
SONANGOL P&P	45.00%	SONANGOL P&P	30.00%		
SSI 31	15.00%	SSI 32	20.00%		
EQUINOR ANGOLA	13.33%	ESSO	15.00%		
		G&P	05.00%		

BLOCO 44		BLOCO 45		BLOCO 46	
ESSO EXPL. PROD. ANG. (BLOCO 44) LTD	60.00%	ExxonMobil Expl. Prod. ANG.(BLO 45)LTD	60.00%	ANPG	100.00%
SONANGOL P&P S.A.	40.00%	SONANGOL P&P S.A.	40.00%		

BLOCO 47		BLOCO 48	
ANPG	100.00%	TOTAL E&P ANGOLA BLOCK 48 B.V.(OP)	40.00%
		SONANGOL PESQUISA E PRODUÇÃO S.A	30.00%
		QATAR PETROLEUM INTER. UPSTREAM LLC	30.00%

### BLOCOS EM PROCESSO DE ABANDONO

BLOCO 19/11		BLOCO 22/11		BLOCO 24/11	
BP (OP)	50.00%	REPSOL ANGOLA 22 B.V. (OP)	30.00%	BP (OP)	50.00%
SONANGOL P&P	40.00%	SONANGOL P&P	50.00%	SONANGOL P&P	50.00%
CHINA SONANGOL	10.00%	EQUINOR	20.00%		

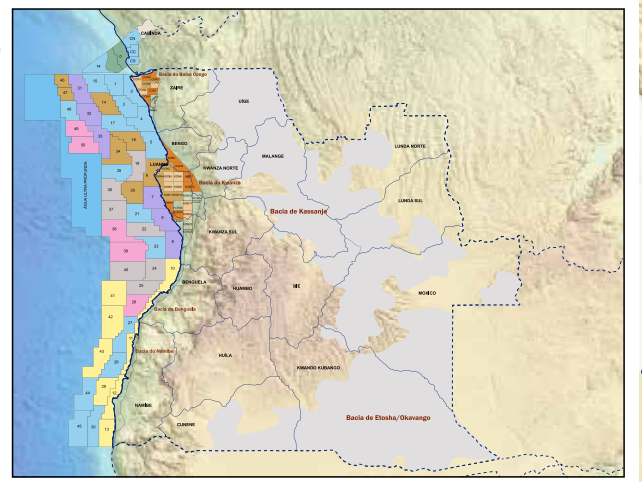
BLOCO 25/11		BLOCO - 36/11		BLOCO - 37/11	
TOTAL (OP)	35.00%	CONOCOPHILLIPS (OP)	50.00%	CONOCOPHILLIPS (OP)	30.00%
SONANGOL P&P	30.00%	SONANGOL P&P	50.00%	SONANGOL P&P	50.00%
EQUINOR	20.00%			REPSOL	20.00%
BP	15.00%				

BLOCO - 40/11	
TOTAL (OP)	40.00%
SONANGOL P&P	30.00%
EQUINOR	20.00%
PETRONAS	10.00%

### LEGENDA

- ÁREA EM EXPLORAÇÃO
- ÁREA EM PRODUÇÃO
- ÁREA LIVRE
- PROCESSO DE ABANDONO
- NEGOCIAÇÃO
- LICITAÇÃO 2019
- LICITAÇÃO 2020
- LICITAÇÃO 2021
- LICITAÇÃO 2023
- BLOCOS LIVRES
- BACIAS DE ANGOLA
- BACIAS INTERIORES
- Dados Culturais
- CAPITAL
- FRONTEIRA
- RIO
- MILHAS
- PROVÍNCIAS



6° 40'0"E

10° 0'0"E

13° 20'0"E

16° 40'0"E