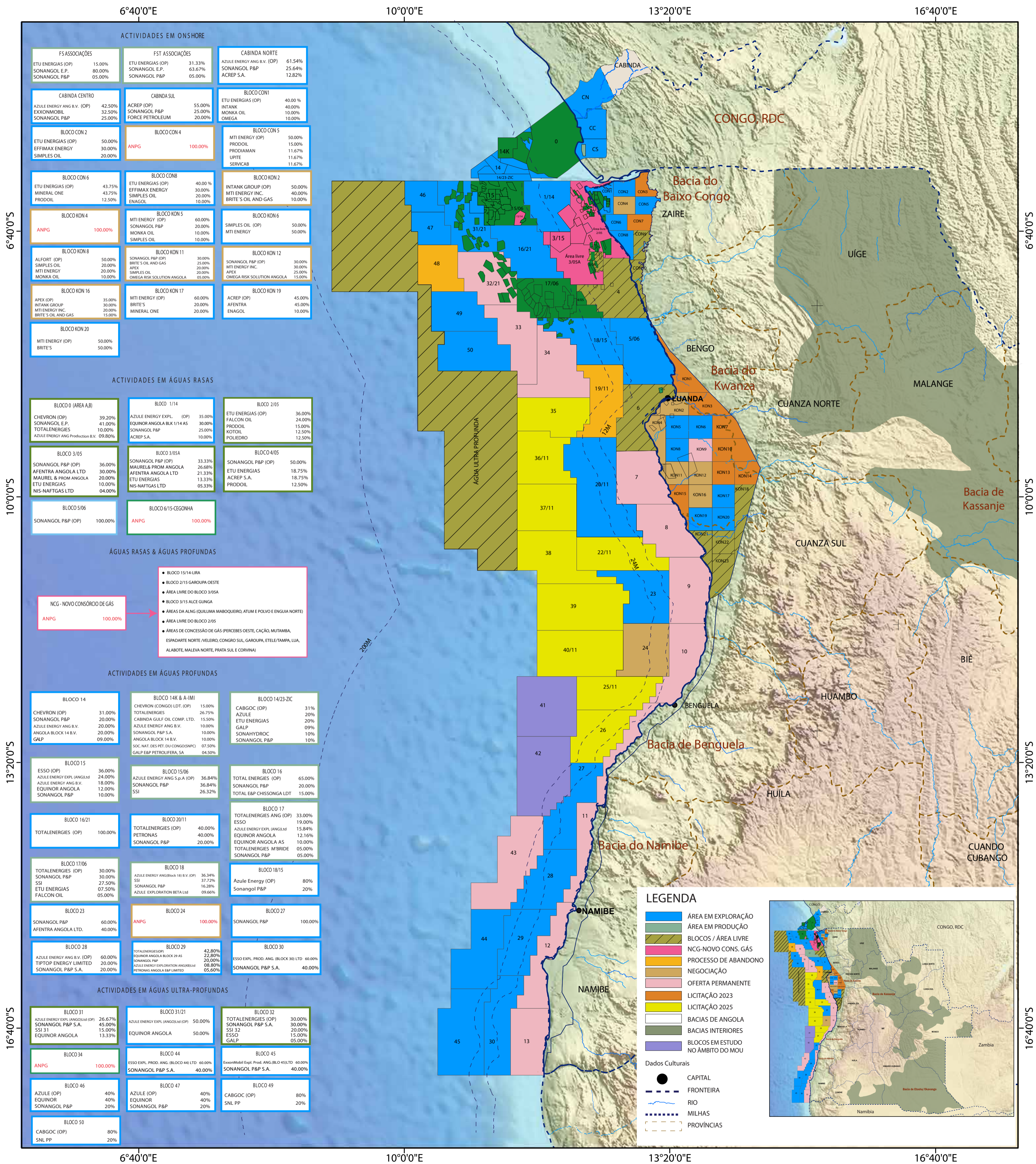


ANGOLA MAPA DE CONCESSÕES



ATIVIDADES EM ONSHORE		
FS ASSOCIAÇÕES	FST ASSOCIAÇÕES	CABINDA NORTE
ETU ENERGIAS (OP) 15.00%	ETU ENERGIAS (OP) 31.33%	AZULE ENERGY ANG B.V. (OP) 61.54%
SONANGOL E.P. 80.00%	SONANGOL E.P. 63.67%	SONANGOL P&P 25.64%
SONANGOL P&P 05.00%	SONANGOL P&P 05.00%	ACREP S.A. 12.82%
CABINDA CENTRO	CABINDA SUL	BLOCO CON1
AZULE ENERGY ANG B.V. (OP) 42.50%	ACREP (OP) 55.00%	ETU ENERGIAS (OP) 40.00%
EXXONMOBIL 32.50%	SONANGOL P&P 25.00%	INTANK 40.00%
SONANGOL P&P 25.00%	FORCE PETROLEUM 20.00%	MONKA OIL 10.00%
BLOCO CON 2	BLOCO CON 4	BLOCO CON 5
ETU ENERGIAS (OP) 50.00%	ANPG 100.00%	MTI ENERGY (OP) 50.00%
EFFIMAX ENERGY 30.00%		PRODOIL 15.00%
SIMPLES OIL 20.00%		PRODIAMAN 11.67%
		UPITE 11.67%
		SERVICAB 11.67%
BLOCO CON 6	BLOCO CON8	BLOCO KON 2
ETU ENERGIAS (OP) 43.75%	ETU ENERGIAS (OP) 40.00%	INTANK GROUP (OP) 50.00%
MINERAL ONE 43.75%	EFFIMAX ENERGY 30.00%	MTI ENERGY INC. 40.00%
PRODOIL 12.50%	SIMPLES OIL 20.00%	BRITE'S OIL AND GAS 10.00%
	ENAGOL 10.00%	
BLOCO KON 4	BLOCO KON 5	BLOCO KON 6
ANPG 100.00%	MTI ENERGY (OP) 60.00%	SIMPLES OIL (OP) 50.00%
	SONANGOL P&P 20.00%	MTI ENERGY 50.00%
	MONKA OIL 10.00%	
	SIMPLES OIL 10.00%	
BLOCO KON 8	BLOCO KON 11	BLOCO KON 12
ALFORT (OP) 50.00%	SONANGOL P&P (OP) 30.00%	SONANGOL P&P (OP) 30.00%
SIMPLES OIL 20.00%	BRITE'S OIL AND GAS 25.00%	MTI ENERGY INC. 30.00%
MTI ENERGY 20.00%	APEX 20.00%	APEX 25.00%
MONKA OIL 10.00%	OMEGA RISK SOLUTION ANGOLA 05.00%	OMEGA RISK SOLUTION ANGOLA 15.00%
BLOCO KON 16	BLOCO KON 17	BLOCO KON 19
APEX (OP) 35.00%	MTI ENERGY (OP) 60.00%	ACREP (OP) 45.00%
INTANK GROUP 30.00%	BRITE'S 20.00%	AFENTRA 45.00%
MTI ENERGY INC. 20.00%	MINERAL ONE 20.00%	ENAGOL 10.00%
BRITE'S OIL AND GAS 15.00%		
BLOCO KON 20		
MTI ENERGY (OP) 50.00%		
BRITE'S 50.00%		
ATIVIDADES EM ÁGUAS RASAS		
BLOCO 0 (AREA A,B)	BLOCO 1/14	BLOCO 2/05
CHEVRON (OP) 39.20%	AZULE ENERGY EXPL. (OP) 35.00%	ETU ENERGIAS (OP) 36.00%
SONANGOL E.P. 41.00%	EQUINOR ANGOLA BLK 1/14 AS 30.00%	FALCON OIL 24.00%
TOTALENERGIES 10.00%	SONANGOL P&P 25.00%	PRODOIL 15.00%
AZULE ENERGY ANG Production B.V. 09.80%	ACREP S.A. 10.00%	KOTOIL 12.50%
		POLIEDRO 12.50%
BLOCO 3/05	BLOCO 3/05A	BLOCO 4/05
SONANGOL P&P (OP) 36.00%	SONANGOL P&P (OP) 33.33%	SONANGOL P&P (OP) 50.00%
AFENTRA ANGOLA LTD 30.00%	MAUREL & PROM ANGOLA 26.68%	ETU ENERGIAS 18.75%
MAUREL & PROM ANGOLA 20.00%	AFENTRA ANGOLA LTD 21.33%	ACREP S.A. 18.75%
ETU ENERGIAS 10.00%	ETU ENERGIAS 13.33%	PRODOIL 12.50%
NIS-NAFTGAS LTD 04.00%	NIS-NAFTGAS LTD 05.33%	
BLOCO 5/06	BLOCO 6/15-CEGONHA	
SONANGOL P&P (OP) 100.00%	ANPG 100.00%	
AGUAS RASAS & ÁGUAS PROFUNDAS		
<ul style="list-style-type: none"> • BLOCO 15/14-LIRA • BLOCO 2/15 GAROUPA OESTE • ÁREA LIVRE DO BLOCO 3/05A • BLOCO 3/15 ALCE GUNGA • ÁREAS DA ALNG (IQUILUMA MABOQUEIRO, ATUM E POLVO E ENGUIA NORTE) • ÁREA LIVRE DO BLOCO 2/05 • ÁREAS DE CONCESSÃO DE GÁS (PERCEBS OESTE, CAÇÃO, MUTAMBA, ESPADARTE NORTE, VELEIRO, CONGRO SUL, GAROUPA, ETELE/TAMPA, LUJA, ALABOTE, MALEVA NORTE, PRATA SUL E CORVINA) 		
<p>NGC - NOVO CONSÓRCIO DE GÁS</p> <p>ANPG 100.00%</p>		
ATIVIDADES EM ÁGUAS PROFUNDAS		
BLOCO 14	BLOCO 14K & A-IMI	BLOCO 14/23-ZIC
CHEVRON (OP) 31.00%	CHEVRON (CONGO) LDT. (OP) 15.00%	CABGOC (OP) 31%
SONANGOL P&P 20.00%	TOTALENERGIES 26.75%	AZULE 20%
AZULE ENERGY ANG B.V. 20.00%	CABINDA GULF OIL COMP. LTD. 15.50%	ETU ENERGIAS 20%
ANGOLA BLOCK 14 B.V. 20.00%	AZULE ENERGY ANG B.V. 10.00%	GALP 09%
GALP 09.00%	SONANGOL P&P S.A. 10.00%	SONAHYDROC 10%
	ANGOLA BLOCK 14 B.V. 10.00%	SONANGOL P&P 10%
	SOC. NAT. DES. PET. DU CONGO(SNP) 07.50%	
	GALP&P PETROLIFERA, SA 04.50%	
BLOCO 15	BLOCO 15/06	BLOCO 16
ESSO (OP) 36.00%	AZULE ENERGY ANG S.p.A. (OP) 36.84%	TOTAL ENERGIAS (OP) 65.00%
AZULE ENERGY EXPL. (ANGOLD) 24.00%	SONANGOL P&P 36.84%	SONANGOL P&P 20.00%
AZULE ENERGY ANG B.V. 18.00%	SSI 26.32%	TOTAL E&P CHISSONGA LDT 15.00%
EQUINOR ANGOLA 12.00%		
SONANGOL P&P 10.00%		
BLOCO 16/21	BLOCO 20/11	BLOCO 17
TOTALENERGIES (OP) 100.00%	TOTALENERGIES (OP) 40.00%	TOTALENERGIES ANG (OP) 33.00%
	PETRONAS 40.00%	ESSO 19.00%
	SONANGOL P&P 20.00%	AZULE ENERGY EXPL. (ANGOLD) 15.84%
		EQUINOR ANGOLA 12.16%
		EQUINOR ANGOLA AS 10.00%
		TOTALENERGIES M'BRIDE 05.00%
		SONANGOL P&P 05.00%
BLOCO 17/06	BLOCO 18	BLOCO 18/15
TOTALENERGIES (OP) 30.00%	AZULE ENERGY ANG(BLOCK 18) B.V. (OP) 36.34%	Azule Energy (OP) 80%
SONANGOL P&P 30.00%	SSI 37.72%	Sonangol P&P 20%
ETU ENERGIAS 27.50%	SONANGOL P&P 16.28%	
FALCON OIL 05.00%	AZULE EXPLORATION BETA LTD 09.66%	
BLOCO 23	BLOCO 24	BLOCO 27
SONANGOL P&P 60.00%	ANPG 100.00%	SONANGOL P&P 100.00%
AFENTRA ANGOLA LTD. 40.00%		
BLOCO 28	BLOCO 29	BLOCO 30
AZULE ENERGY ANG B.V. (OP) 60.00%	TOTALENERGIES (OP) 42.80%	ESSO EXPL. PROD. ANG. (BLOCK 30) LTD 60.00%
TIPTOP ENERGY LIMITED 20.00%	EQUINOR ANGOLA BLOCK 29 AS 22.80%	SONANGOL P&P S.A. 40.00%
SONANGOL P&P S.A. 20.00%	SONANGOL P&P 20.00%	
	AZULE ENERGY EXPLORATION ANG(BLOCK 29) LTD 08.80%	
	PETRONAS ANGOLA E&P LIMITED 05.60%	
ATIVIDADES EM ÁGUAS ULTRA-PROFUNDAS		
BLOCO 31	BLOCO 31/21	BLOCO 32
AZULE ENERGY EXPL. (ANGOLD) (OP) 26.67%	AZULE ENERGY EXPL. (ANGOLD) (OP) 50.00%	TOTALENERGIES (OP) 30.00%
SONANGOL P&P S.A. 45.00%	EQUINOR ANGOLA 50.00%	SONANGOL P&P S.A. 30.00%
SSI 31 15.00%		SSI 32 20.00%
EQUINOR ANGOLA 13.33%		ESSO 15.00%
		GALP 05.00%
BLOCO 34	BLOCO 44	BLOCO 45
ANPG 100.00%	ESSO EXPL. PROD. ANG. (BLOCK 44) LTD 60.00%	ExxonMobil Expl. Prod. ANG.(BLO 45)LTD 60.00%
	SONANGOL P&P S.A. 40.00%	SONANGOL P&P S.A. 40.00%
BLOCO 46	BLOCO 47	BLOCO 49
AZULE (OP) 40%	AZULE (OP) 40%	CABGOC (OP) 80%
EQUINOR 40%	EQUINOR 40%	SNL PP 20%
SONANGOL P&P 20%	SONANGOL P&P 20%	
BLOCO 50		
SSI 80%		
SNL PP 20%		

LEGENDA

- ÁREA EM EXPLORAÇÃO
- ÁREA EM PRODUÇÃO
- BLOCOS / ÁREA LIVRE
- NGC-NOVO CONS. GÁS
- PROCESSO DE ABANDONO
- NEGOCIAÇÃO
- OFERTA PERMANENTE
- LICITAÇÃO 2023
- LICITAÇÃO 2025
- BACIAS DE ANGOLA
- BACIAS INTERIORES
- BLOCOS EM ESTUDO
- NO ÂMBITO DO MOU

Dados Culturais

- CAPITAL
- FRONTEIRA
- RIO
- MILHAS
- PROVÍNCIAS