

ANGOLA MAPA DE CONCESSÕES

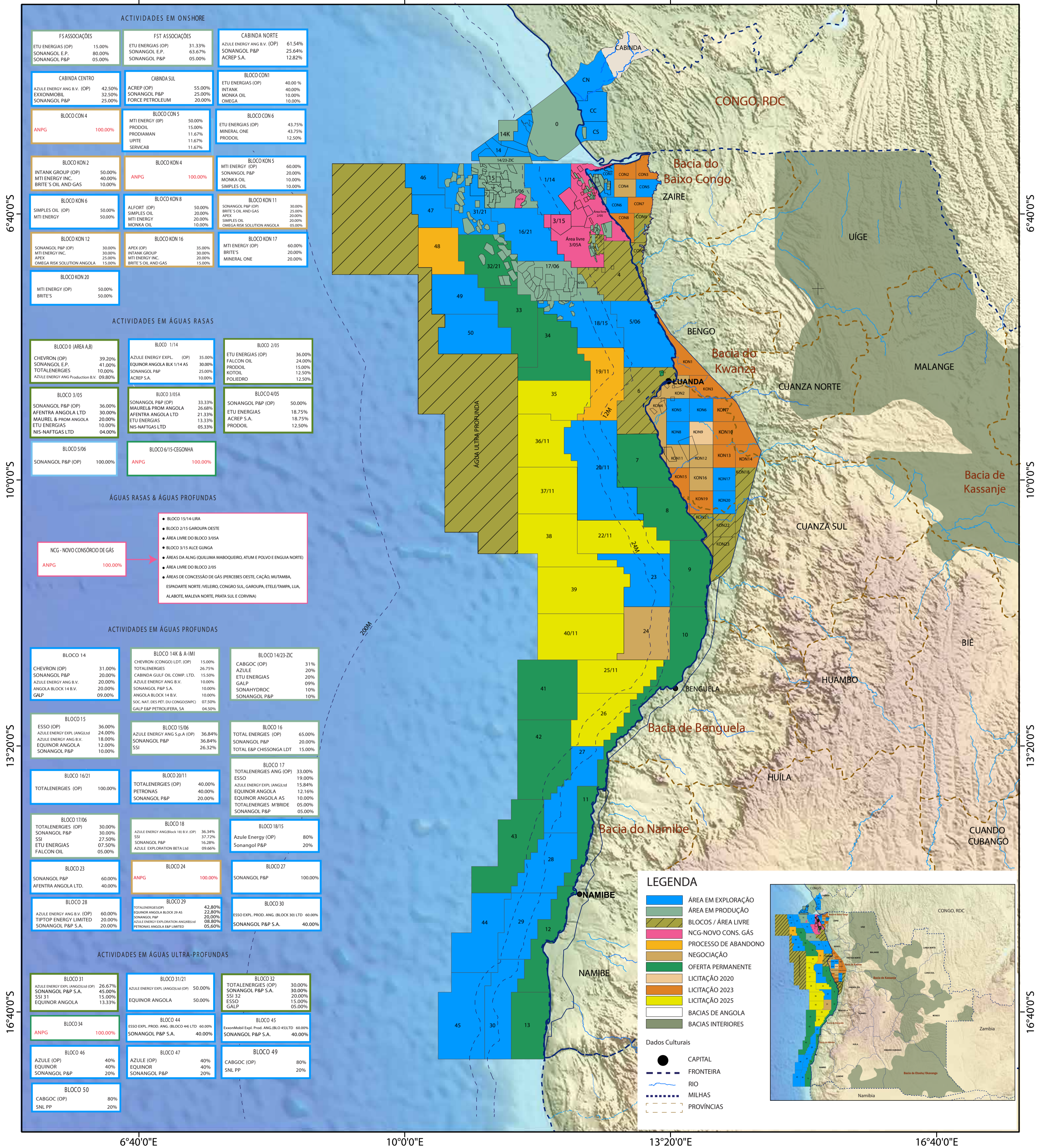


6°40'0"E

10°0'0"E

13°20'0"E

16°40'0"E



ATIVIDADES EM ONSHORE

FS ASSOCIAÇÕES	FST ASSOCIAÇÕES	CABINDA NORTE
ETU ENERGIAS (OP) 15.00% SONANGOL E.P. 80.00% SONANGOL P&P 05.00%	ETU ENERGIAS (OP) 31.33% SONANGOL E.P. 63.67% SONANGOL P&P 05.00%	AZULE ENERGY ANG B.V. (OP) 61.54% SONANGOL P&P 25.64% ACREP S.A. 12.82%
CABINDA CENTRO	CABINDA SUL	BLOCO CON1
AZULE ENERGY ANG B.V. (OP) 42.50% EXXONMOBIL 32.50% SONANGOL P&P 25.00%	ACREP (OP) 55.00% SONANGOL P&P 25.00% FORCE PETROLEUM 20.00%	ETU ENERGIAS (OP) 40.00% INTANK 40.00% MONKA OIL 10.00% OMEGA 10.00%
BLOCO CON 4	BLOCO CON 5	BLOCO CON 6
ANPG 100.00%	MTI ENERGY (OP) 50.00% PRODOIL 15.00% PRODIAMAN 11.67% UPITE 11.67% SERVICAB 11.67%	ETU ENERGIAS (OP) 43.75% MINERAL ONE 43.75% PRODOIL 12.50%
BLOCO KON 2	BLOCO KON 4	BLOCO KON 5
INTANK GROUP (OP) 50.00% MTI ENERGY INC. 40.00% BRITE'S OIL AND GAS 10.00%	ANPG 100.00%	MTI ENERGY (OP) 60.00% SONANGOL P&P 20.00% BRITE'S OIL AND GAS 10.00% SIMPLES OIL 10.00%
BLOCO KON 6	BLOCO KON 8	BLOCO KON 11
SIMPLES OIL (OP) 50.00% MTI ENERGY 50.00%	ALFORT (OP) 50.00% SIMPLES OIL 20.00% MTI ENERGY 20.00% MONKA OIL 10.00%	SONANGOL P&P (OP) 30.00% BRITE'S OIL AND GAS 25.00% APEX 20.00% SIMPLES OIL 20.00% OMEGA RISK SOLUTION ANGOLA 05.00%
BLOCO KON 12	BLOCO KON 16	BLOCO KON 17
SONANGOL P&P (OP) 30.00% MTI ENERGY INC. 30.00% APEX 25.00% OMEGA RISK SOLUTION ANGOLA 15.00%	APEX (OP) 35.00% INTANK GROUP 20.00% MTI ENERGY INC. 20.00% BRITE'S OIL AND GAS 15.00%	MTI ENERGY (OP) 60.00% BRITE'S 20.00% MINERAL ONE 20.00%
BLOCO KON 20	MTI ENERGY (OP) 50.00% BRITE'S 50.00%	

ATIVIDADES EM ÁGUAS RASAS

BLOCO 0 (AREA A,B)	BLOCO 1/14	BLOCO 2/05
CHEVRON (OP) 39.20% SONANGOL E.P. 41.00% TOTALENERGIES 10.00% AZULE ENERGY ANG Production B.V. 09.80%	AZULE ENERGY EXPL. (OP) 35.00% EQUINOR ANGOLA BLK 1/14 AS 30.00% SONANGOL P&P 25.00% ACREP S.A. 10.00%	ETU ENERGIAS (OP) 36.00% FALCON OIL 24.00% PRODOIL 15.00% KOTOL 12.50% POLIEDRO 12.50%
BLOCO 3/05	BLOCO 3/05A	BLOCO 4/05
SONANGOL P&P (OP) 36.00% AFENTRA ANGOLA LTD 30.00% MAUREL & PROM ANGOLA 20.00% ETU ENERGIAS 10.00% NIS-NAFTGAS LTD 04.00%	SONANGOL P&P (OP) 33.33% MAUREL & PROM ANGOLA 26.68% AFENTRA ANGOLA LTD 21.33% ETU ENERGIAS 13.33% NIS-NAFTGAS LTD 05.33%	SONANGOL P&P (OP) 50.00% ETU ENERGIAS 18.75% ACREP S.A. 18.75% PRODOIL 12.50%
BLOCO 5/06	BLOCO 6/15-CEGONHA	
SONANGOL P&P (OP) 100.00%	ANPG 100.00%	

ÁGUAS RASAS & ÁGUAS PROFUNDAS

<p>● BLOCO 15/14-LIRA</p> <p>● BLOCO 2/15 GAROUPA OESTE</p> <p>● ÁREA LIVRE DO BLOCO 3/05A</p> <p>● BLOCO 3/15 ALCE GUNGA</p> <p>● ÁREAS DA ALING (OUILIMA MABOQUEIRO, ATUM E POLVO E ENGUIA NORTE)</p> <p>● ÁREA LIVRE DO BLOCO 2/05</p> <p>● ÁREAS DE CONCESSÃO DE GÁS (PERCEBES OESTE, CAÇÃO, MUTAMBA, ESPADARTE NORTE, VELEIRO, CONGRO SUL, GAROUPA, ETE/ETAMPA, LUA, ALABOTE, MALEVA NORTE, PRATA SUL E CORVINA)</p>	<p>● NCG - NOVO CONSÓRCIO DE GÁS</p> <p>ANPG 100.00%</p>
---	--

ATIVIDADES EM ÁGUAS PROFUNDAS

BLOCO 14	BLOCO 14K & A-IMI	BLOCO 14/23-ZIC
CHEVRON (OP) 31.00% SONANGOL P&P 20.00% AZULE ENERGY ANG B.V. 20.00% ANGOLA BLOCK 14 B.V. 09.00% GALP 20.00%	CHEVRON (CONGO) LDT. (OP) 15.00% TOTALENERGIES 26.75% CABINDA GULF OIL COMP. LTD. 15.50% AZULE ENERGY ANG B.V. 10.00% SONANGOL P&P S.A. 10.00% ANGOLA BLOCK 14 B.V. 10.00% SOC. NAT. DES PET. DU CONGO(SNPIC) 07.50% GALP E&P PETROLIFERA, SA 04.50%	CABGOC (OP) 31% AZULE 20% ETU ENERGIAS 20% GALP 09% SONAHYDROC 10% SONANGOL P&P 10%
BLOCO 15	BLOCO 15/06	BLOCO 16
ESSO (OP) 36.00% AZULE ENERGY EXPL (ANG) LTD 24.00% AZULE ENERGY ANG B.V. 18.00% EQUINOR ANGOLA 12.00% SONANGOL P&P 10.00%	AZULE ENERGY ANG S.p.A. (OP) 36.84% SONANGOL P&P 36.84% SSI 26.32%	TOTAL ENERGIAS (OP) 65.00% SONANGOL P&P 20.00% TOTAL E&P CHISSONGA LDT 15.00%
BLOCO 16/21	BLOCO 20/11	BLOCO 17
TOTALENERGIES (OP) 100.00%	TOTALENERGIES (OP) 40.00% PETRONAS 40.00% SONANGOL P&P 20.00%	TOTALENERGIES ANG (OP) 33.00% ESSO 19.00% AZULE ENERGY EXPL (ANG) LTD 15.84% EQUINOR ANGOLA 12.16% EQUINOR ANGOLA AS 10.00% TOTALENERGIES MBRIDE 05.00% SONANGOL P&P 05.00%
BLOCO 17/06	BLOCO 18	BLOCO 18/15
TOTALENERGIES (OP) 30.00% SONANGOL P&P 30.00% SSI 27.50% ETU ENERGIAS 07.50% FALCON OIL 05.00%	AZULE ENERGY ANG(BLCK 18) B.V. (OP) 36.34% SSI 37.72% SONANGOL P&P 16.28% AZULE EXPLORATION BETA LTD 09.66%	Azule Energy (OP) 80% Sonangol P&P 20%
BLOCO 23	BLOCO 24	BLOCO 27
SONANGOL P&P 60.00% AFENTRA ANGOLA LTD. 40.00%	ANPG 100.00%	SONANGOL P&P 100.00%
BLOCO 28	BLOCO 29	BLOCO 30
AZULE ENERGY ANG B.V. (OP) 60.00% TIPTOP ENERGY LIMITED 20.00% SONANGOL P&P S.A. 20.00%	TOTALENERGIES (OP) 42.80% EQUINOR ANGOLA BLOCK 29 AS 22.80% SONANGOL P&P 20.00% AZULE ENERGY EXPLORATION ANG(BLCK) 08.80% PETRONAS ANGOLA E&P LIMITED 05.60%	ESSO EXPL. PROD. ANG. (BLOCK 30) LTD 60.00% SONANGOL P&P S.A. 40.00%

ATIVIDADES EM ÁGUAS ULTRA-PROFUNDAS

BLOCO 31	BLOCO 31/21	BLOCO 32
AZULE ENERGY EXPL (ANG) LTD (OP) 26.67% SONANGOL P&P S.A. 45.00% SSI 15.00% EQUINOR ANGOLA 13.33%	AZULE ENERGY EXPL (ANG) LTD (OP) 50.00% EQUINOR ANGOLA 50.00%	TOTALENERGIES (OP) 30.00% SONANGOL P&P S.A. 30.00% SSI 15.00% ESSO 15.00% GALP 05.00%
BLOCO 34	BLOCO 44	BLOCO 45
ANPG 100.00%	ESSO EXPL. PROD. ANG. (BLOCO 44) LTD 60.00% SONANGOL P&P S.A. 40.00%	ExxonMobil Expl. Prod. ANG. (BLO 45) LTD 60.00% SONANGOL P&P S.A. 40.00%
BLOCO 46	BLOCO 47	BLOCO 49
AZULE (OP) 40% EQUINOR 40% SONANGOL P&P 20%	AZULE (OP) 40% EQUINOR 40% SONANGOL P&P 20%	CABGOC (OP) 80% SNL PP 20%
BLOCO 50		
CABGOC (OP) 80% SNL PP 20%		

LEGENDA

- ÁREA EM EXPLORAÇÃO
 - ÁREA EM PRODUÇÃO
 - BLOCOS / ÁREA LIVRE
 - NCG-NOVO CONS. GÁS
 - PROCESSO DE ABANDONO
 - NEGOCIAÇÃO
 - OFERTA PERMANENTE
 - LICITAÇÃO 2020
 - LICITAÇÃO 2023
 - LICITAÇÃO 2025
 - BACIAS DE ANGOLA
 - BACIAS INTERIORES
- Dados Culturais
- CAPITAL
 - FRONTEIRA
 - RIO
 - MILHAS
 - PROVÍNCIAS

