

ANGOLA

MAPA DE CONCESSÕES



6°40'0"E

10°0'0"E

13°20'0"E

16°40'0"E

ATIVIDADES EM ONSHORE

FS ASSOCIAÇÕES		FST ASSOCIAÇÕES		CABINDA NORTE	
ETU ENERGIAS (OP)	15.00%	ETU ENERGIAS (OP)	31.33%	AZULE ENERGY ANG B.V. (OP)	61.54%
SONANGOL E.P.	80.00%	SONANGOL E.P.	63.67%	SONANGOL P&P	25.64%
SONANGOL P&P	05.00%	SONANGOL P&P	05.00%	ACREP S.A.	12.82%
CABINDA CENTRO		CABINDA SUL		BLOCO CON1	
AZULE ENERGY ANG B.V. (OP)	42.50%	ACREP (OP)	55.00%	ETU ENERGIAS (OP)	40.00%
EXXONMOBIL	32.50%	SONANGOL P&P	25.00%	INTANK	40.00%
SONANGOL P&P	25.00%	FORCE PETROLEUM	20.00%	MONKA OIL	10.00%
				OMEGA	10.00%
BLOCO CON 4		BLOCO CON 5		BLOCO CON 6	
ANPG	100.00%	MTI ENERGY (OP)	50.00%	ETU ENERGIAS (OP)	43.75%
		PRODOIL	15.00%	MINERAL ONE	43.75%
		PRODIAMAN	11.67%	PRODOIL	12.50%
		URITE	11.67%		
		SERVICAB	11.67%		
BLOCO KON 2		BLOCO KON 4		BLOCO KON 5	
INTANK GROUP (OP)	50.00%	ANPG	100.00%	MTI ENERGY (OP)	60.00%
MTI ENERGY INC.	40.00%			SONANGOL P&P	20.00%
BRITE'S OIL AND GAS	10.00%			MONKA OIL	10.00%
				SIMPLES OIL	10.00%
BLOCO KON 6		BLOCO KON 8		BLOCO KON 11	
SIMPLES OIL (OP)	50.00%	ALFORT (OP)	50.00%	SONANGOL P&P (OP)	30.00%
MTI ENERGY	50.00%	SIMPLES OIL	20.00%	BRITE'S OIL AND GAS	25.00%
		MTI ENERGY	20.00%	AFEX	20.00%
		MONKA OIL	10.00%	SIMPLES OIL	20.00%
				OMEGA RISK SOLUTION ANGOLA	05.00%
BLOCO KON 12		BLOCO KON 16		BLOCO KON 17	
SONANGOL P&P (OP)	30.00%	APEX (OP)	35.00%	MTI ENERGY (OP)	60.00%
MTI ENERGY INC.	30.00%	INTANK GROUP	20.00%	BRITE'S	20.00%
APEX	25.00%	MTI ENERGY INC.	20.00%	MINERAL ONE	20.00%
OMEGA RISK SOLUTION ANGOLA	15.00%	BRITE'S OIL AND GAS	15.00%		
BLOCO KON 20					
MTI ENERGY (OP)	50.00%				
BRITE'S	50.00%				

ATIVIDADES EM ÁGUAS RASAS

BLOCO 0 (ÁREA A,B)		BLOCO 1/14		BLOCO 2/05	
CHEVRON (OP)	39.20%	AZULE ENERGY EXPL. (OP)	35.00%	ETU ENERGIAS (OP)	36.00%
SONANGOL E.P.	41.00%	EQUINOR ANGOLA BLK 1/14 AS	30.00%	FALCON OIL	24.00%
TOTALENERGIES	10.00%	SONANGOL P&P	25.00%	PRODOIL	15.00%
AZULE ENERGY ANG Production B.V.	09.80%	ACREP S.A.	10.00%	KOTOIL	12.50%
				POLIEDRO	12.50%
BLOCO 3/05		BLOCO 3/05A		BLOCO 4/05	
SONANGOL P&P (OP)	36.00%	SONANGOL P&P (OP)	33.33%	SONANGOL P&P (OP)	50.00%
AFENTRA ANGOLA LTD	30.00%	MAUREL & PROM ANGOLA	26.67%	ETU ENERGIAS	18.75%
MAUREL & PROM ANGOLA	20.00%	AFENTRA ANGOLA LTD	21.33%	ACREP S.A.	18.75%
ETU ENERGIAS	10.00%	ETU ENERGIAS	13.33%	PRODOIL	12.50%
NIS-NAFTGAS LTD	04.00%	NIS-NAFTGAS LTD	05.33%		
BLOCO 5/06		BLOCO 6/15-CEGONHA			
SONANGOL P&P (OP)	100.00%	ANPG	100.00%		

ÁGUAS RASAS & ÁGUAS PROFUNDAS

<ul style="list-style-type: none"> BLOCO 15/14-LIRA BLOCO 2/15 GAROUPA OESTE BLOCO 3/05A BLOCO 3/15 ALCE GUINGA ÁREAS DA ALING (IQUILUMA MABOQUEIRO, ATUM E POLVO E ENGUIA NORTE) ÁREA LIVRE DO BLOCO 2/05 ÁREAS DE CONCESSÃO DE GÁS (PERCEBES OESTE, CAÇÃO, MUTAMBA, ESPADARTE NORTE, VELEIRO, CONGO SUL, GAROUPA, ETELE/TAMPA, LUA, ALABOTE, MALEVA NORTE, PRATA SUL E CORVINA) 	
<p>NGC - NOVO CONSÓRCIO DE GÁS</p> <p>ANPG 100.00%</p>	

ATIVIDADES EM ÁGUAS PROFUNDAS

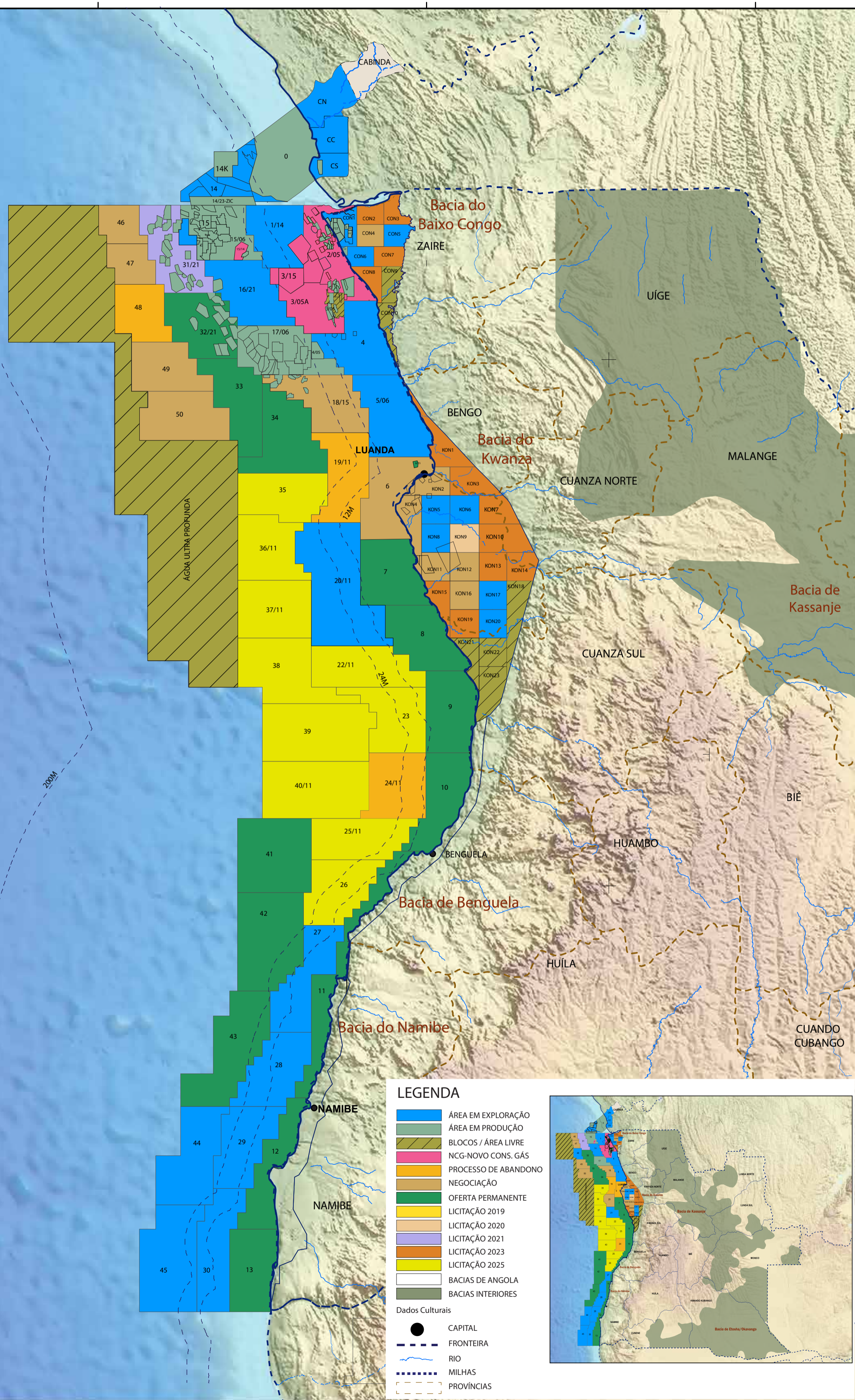
BLOCO 14		BLOCO 14K & A-IMI		BLOCO 14/23-ZIC	
CHEVRON (OP)	31.00%	CHEVRON (CONGO) LTD. (OP)	15.00%	CABGOC (OP)	31%
SONANGOL P&P	20.00%	TOTALENERGIES	26.75%	AZULE	20%
AZULE ENERGY ANG B.V.	20.00%	CABINDA GULF OIL COMP. LTD.	15.50%	ETU ENERGIAS	20%
ANGOLA BLOCK 14 B.V.	20.00%	AZULE ENERGY ANG B.V.	10.00%	GALP	09%
GALP	09.00%	SONANGOL P&P S.A.	10.00%	SONAHYDROC	10%
		ANGOLA BLOCK 14 B.V.	10.00%	SONANGOL P&P	10%
		SOC. NAT. DES. PÉT. DU CONGO(SNP-C)	07.50%		
		GALP E&P PETROLIFERA, SA	04.50%		
BLOCO 15		BLOCO 15/06		BLOCO 16	
ESSO (OP)	36.00%	AZULE ENERGY ANG S.p.A (OP)	36.84%	TOTAL ENERGIAS (OP)	65.00%
AZULE ENERGY EXPL. (ANGOLA)	24.00%	SONANGOL P&P	36.84%	SONANGOL P&P	20.00%
AZULE ENERGY ANG B.V.	18.00%	SSI	26.32%	TOTAL E&P CHISSONGA LTD	15.00%
EQUINOR ANGOLA	12.00%				
SONANGOL P&P	10.00%				
BLOCO 16/21		BLOCO 20/11		BLOCO 17	
TOTALENERGIES (OP)	100.00%	TOTALENERGIES (OP)	40.00%	TOTALENERGIES ANG (OP)	33.00%
		PETRONAS	40.00%	ESSO	19.00%
		SONANGOL P&P	20.00%	AZULE ENERGY EXPL. (ANGOLA)	15.84%
				EQUINOR ANGOLA	12.16%
				EQUINOR ANGOLA AS	10.00%
				TOTALENERGIES MBRIDE	05.00%
				SONANGOL P&P	05.00%
BLOCO 17/06		BLOCO 18		BLOCO 18/15	
TOTALENERGIES (OP)	30.00%	AZULE ENERGY ANG(BLOCK 18) B.V. (OP)	36.34%	Azule Energy (OP)	80%
SONANGOL &P	30.00%	SSI	37.72%	Sonangol P&P	20%
SSI	27.50%	SONANGOL P&P	16.28%		
ETU ENERGIAS	07.50%	AZULE EXPLORATION BETA LTD	09.66%		
FALCON OIL	05.00%				
BLOCO 23		BLOCO 24		BLOCO 27	
SONANGOL P&P	60.00%	ANPG	100.00%	SONANGOL P&P	100.00%
AFENTRA ANGOLA LTD.	40.00%				
BLOCO 28		BLOCO 29		BLOCO 30	
AZULE ENERGY ANG B.V. (OP)	60.00%	TOTALENERGIES(OP)	42.80%	ESSO EXPL. PROD. ANG. (BLOCK 30) LTD	60.00%
TIPTOP ENERGY LIMITED	20.00%	EQUINOR ANGOLA BLOCK 29 AS	22.80%	SONANGOL P&P S.A.	40.00%
SONANGOL P&P S.A.	20.00%	SONANGOL P&P	20.00%		
		AZULE ENERGY EXPLORATION ANG(ELID)	08.80%		
		PETRONAS ANGOLA EXP LIMITED	05.60%		

ATIVIDADES EM ÁGUAS ULTRA-PROFUNDAS

BLOCO 31		BLOCO 31/21		BLOCO 32	
AZULE ENERGY EXPL. (ANGOLA) (OP)	26.67%	AZULE ENERGY EXPL. (ANGOLA) (OP)	50.00%	TOTALENERGIES (OP)	30.00%
SONANGOL P&P S.A.	45.00%	EQUINOR ANGOLA	50.00%	SONANGOL P&P S.A.	30.00%
SSI 31	15.00%			SSI 32	20.00%
EQUINOR ANGOLA	13.33%			ESSO	15.00%
				GALP	05.00%
BLOCO 34		BLOCO 44		BLOCO 45	
ANPG	100.00%	ESSO EXPL. PROD. ANG. (BLOCK 44) LTD	60.00%	ExxonMobil Eapl. Prod. ANG. (BLOCK 45) LTD	60.00%
		SONANGOL P&P S.A.	40.00%	SONANGOL P&P S.A.	40.00%
BLOCO 46		BLOCO 47			
AZULE (OP)	40%	AZULE (OP)	40%		
EQUINOR	40%	EQUINOR	40%		
SONANGOL P&P	20%	SONANGOL P&P	20%		

BLOCOS EM PROCESSO DE ABANDONO

BLOCO 19/11		BLOCO 24/11		BLOCO 48	
BP (OP)	50.00%	BP (OP)	50.00%	TOTALENERGIES ANGOLA BLOCK 48 B.V. (OP)	40.00%
SONANGOL P&P	40.00%	SONANGOL P&P	50.00%	SONANGOL PESQUISA E PRODUÇÃO S.A	30.00%
CHINA SONANGOL	10.00%			QATAR PETROLEUM INTER. UPSTREAM LLC	30.00%

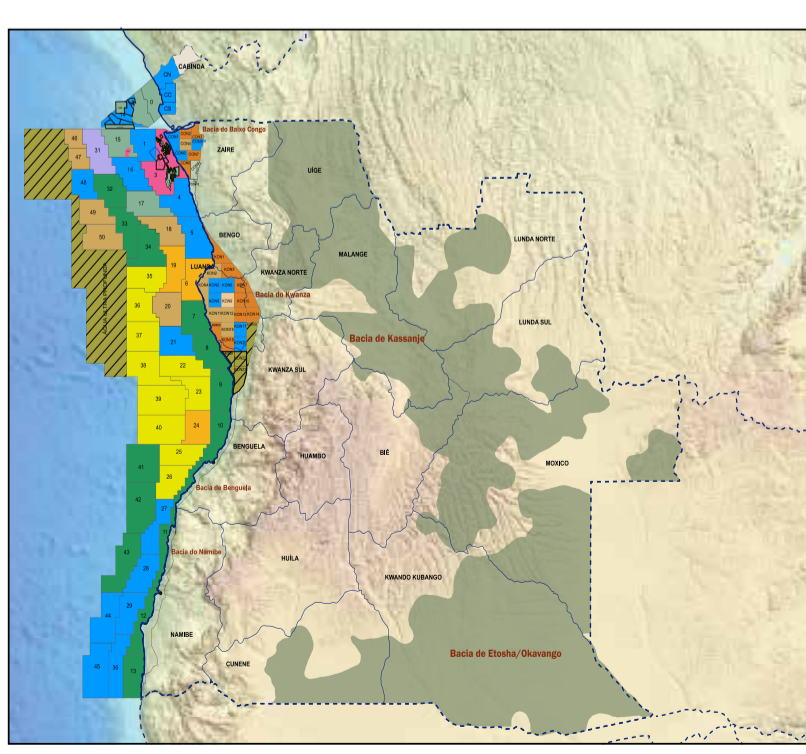


LEGENDA

- ÁREA EM EXPLORAÇÃO
- ÁREA EM PRODUÇÃO
- BLOCOS / ÁREA LIVRE
- NGC-NOVO CONS. GÁS
- PROCESSO DE ABANDONO
- NEGOCIAÇÃO
- OFERTA PERMANENTE
- LICITAÇÃO 2019
- LICITAÇÃO 2020
- LICITAÇÃO 2021
- LICITAÇÃO 2023
- LICITAÇÃO 2025
- BACIAS DE ANGOLA
- BACIAS INTERIORES

Dados Culturais

- CAPITAL
- FRONTEIRA
- RIO
- MILHAS
- PROVÍNCIAS



6°40'0"E

10°0'0"E

13°20'0"E

16°40'0"E

6°40'0"S

10°0'0"S

13°20'0"S

16°40'0"S

6°40'0"S

10°0'0"S

13°20'0"S

16°40'0"S