

ANGOLA MAPA DE CONCESSÕES

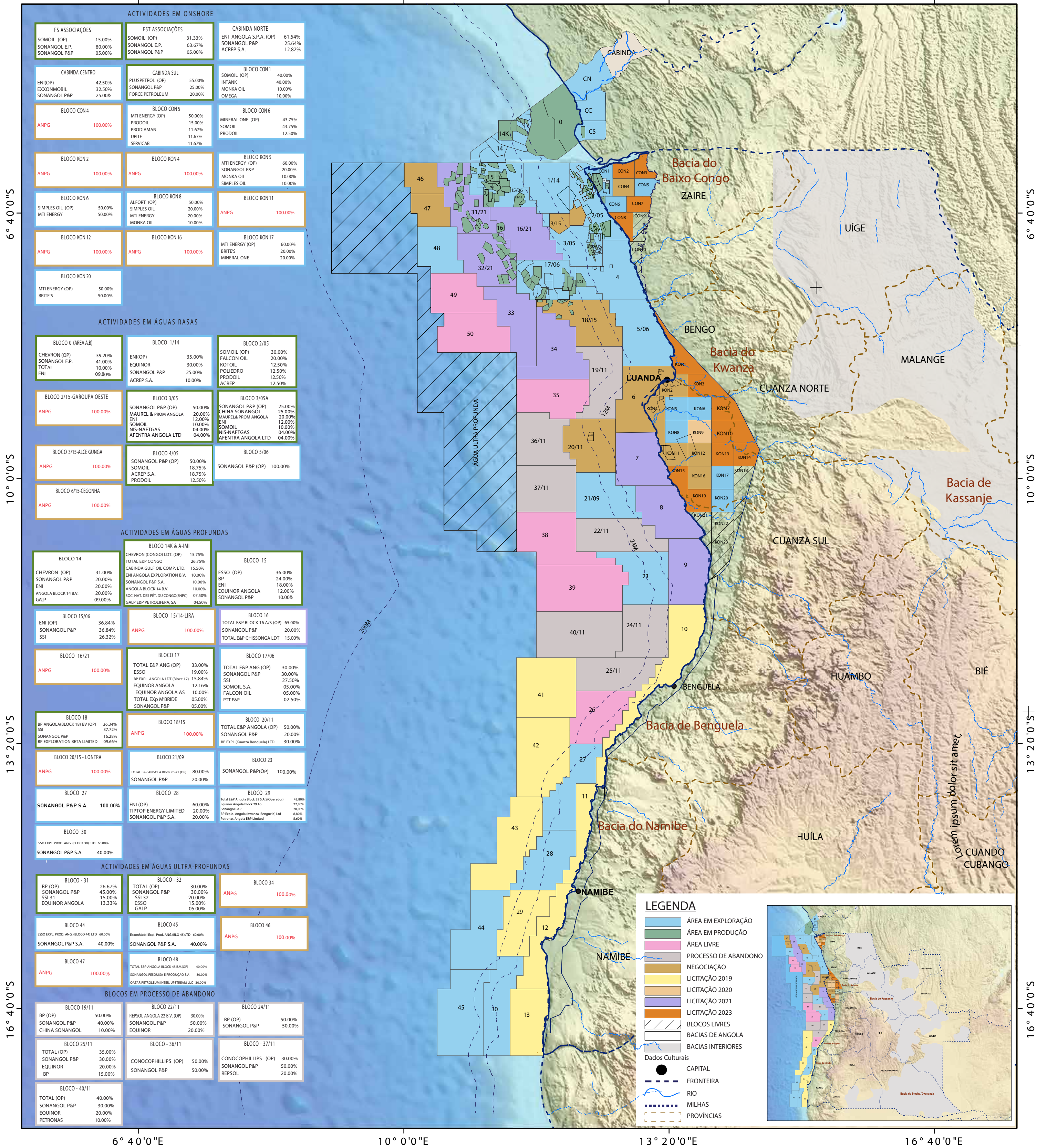


6° 40'0"E

10° 0'0"E

13° 20'0"E

16° 40'0"E



ATIVIDADES EM ONSHORE

| | | |
|-------------------------|------------------------|-------------------------------|
| FS ASSOCIAÇÕES | FST ASSOCIAÇÕES | CABINDA NORTE |
| SOMOIL (OP) 15.00% | SOMOIL (OP) 31.33% | ENI ANGOLA S.P.A. (OP) 61.54% |
| SONANGOL E.P. 80.00% | SONANGOL E.P. 63.67% | SONANGOL P&P 25.64% |
| SONANGOL P&P 05.00% | SONANGOL P&P 05.00% | ACREP S.A. 12.82% |
| CABINDA CENTRO | CABINDA SUL | BLOCO CON 1 |
| ENI(OP) 42.50% | PLUSPETROL (OP) 55.00% | SOMOIL (OP) 40.00% |
| EXXONMOBIL 32.50% | SONANGOL P&P 25.00% | INTANK 40.00% |
| SONANGOL P&P 25.00% | FORCE PETROLEUM 20.00% | MONKA OIL 10.00% |
| | | OMEGA 10.00% |
| BLOCO CON 4 | BLOCO CON 5 | BLOCO CON 6 |
| ANPG 100.00% | MTI ENERGY (OP) 50.00% | MINERAL ONE (OP) 43.75% |
| | PRODOIL 15.00% | SOMOIL 43.75% |
| | PRODIAMAN 11.67% | PRODOIL 12.50% |
| | UPITE 11.67% | |
| | SERVICAB 11.67% | |
| BLOCO KON 2 | BLOCO KON 4 | BLOCO KON 5 |
| ANPG 100.00% | ANPG 100.00% | MTI ENERGY (OP) 60.00% |
| | | SONANGOL P&P 20.00% |
| | | MONKA OIL 10.00% |
| | | SIMPLES OIL 10.00% |
| BLOCO KON 6 | BLOCO KON 8 | BLOCO KON 11 |
| SIMPLES OIL (OP) 50.00% | ALFORT (OP) 50.00% | ANPG 100.00% |
| MTI ENERGY (OP) 50.00% | SIMPLES OIL 20.00% | |
| | MTI ENERGY 20.00% | |
| | MONKA OIL 10.00% | |
| BLOCO KON 12 | BLOCO KON 16 | BLOCO KON 17 |
| ANPG 100.00% | ANPG 100.00% | MTI ENERGY (OP) 60.00% |
| | | BRIT'S 20.00% |
| | | MINERAL ONE 20.00% |
| BLOCO KON 20 | | |
| MTI ENERGY (OP) 50.00% | | |
| BRIT'S 50.00% | | |

ATIVIDADES EM ÁGUAS RASAS

| | | |
|--------------------------------|-----------------------------|-----------------------------|
| BLOCO 0 (AREA AB) | BLOCO 1/14 | BLOCO 2/05 |
| CHEVRON (OP) 39.20% | ENI(OP) 35.00% | SOMOIL (OP) 30.00% |
| SONANGOL E.P. 41.00% | EQUINOR 30.00% | FALCON OIL 20.00% |
| TOTAL 10.00% | SONANGOL P&P 25.00% | KOTOIL 12.50% |
| ENI 09.80% | ACREP S.A. 10.00% | POLIEDRO 12.50% |
| | | PRODOIL 12.50% |
| | | ACREP 12.50% |
| BLOCO 2/15-GAROUA OESTE | BLOCO 3/05 | BLOCO 3/05A |
| ANPG 100.00% | SONANGOL P&P (OP) 50.00% | SONANGOL P&P (OP) 25.00% |
| | MAUREL & PROM ANGOLA 20.00% | CHINA SONANGOL 25.00% |
| | ENI 12.00% | MAUREL & PROM ANGOLA 20.00% |
| | SONANGOL 10.00% | ENI 12.00% |
| | NIS-NAFTGAS 04.00% | SOMOIL 10.00% |
| | AFENTRA ANGOLA LTD 04.00% | NIS-NAFTGAS 04.00% |
| | | AFENTRA ANGOLA LTD 04.00% |
| BLOCO 3/15-ALCE GUNGA | BLOCO 4/05 | BLOCO 5/06 |
| ANPG 100.00% | SONANGOL P&P (OP) 50.00% | SONANGOL P&P (OP) 100.00% |
| | SOMOIL 18.75% | |
| | ACREP S.A. 18.75% | |
| | PRODOIL 12.50% | |
| BLOCO 6/15-CEGONHA | | |
| ANPG 100.00% | | |

ATIVIDADES EM ÁGUAS PROFUNDAS

| | | |
|---|--|--|
| BLOCO 14 | BLOCO 14K & A-IMI | BLOCO 15 |
| CHEVRON (OP) 31.00% | CHEVRON (CONGO) LDT. (OP) 15.75% | ESSO (OP) 36.00% |
| SONANGOL P&P 20.00% | TOTAL E&P CONGO 26.75% | BP 24.00% |
| ENI 20.00% | CABINDA GULF OIL COMP. LTD. 15.50% | ENI 18.00% |
| ANGOLA BLOCK 14 B.V. 20.00% | ENI ANGOLA EXPLORATION B.V. 10.00% | EQUINOR ANGOLA 12.00% |
| GALP 09.00% | SONANGOL P&P S.A. 10.00% | SONANGOL P&P 10.00% |
| | ANGOLA BLOCK 14 B.V. 10.00% | |
| | SOC. NAT. DES. PET. DU CONGO(SNPCI) 07.50% | |
| | GALP E&P PETROLIFERA, SA 04.50% | |
| BLOCO 15/06 | BLOCO 15/14-LIRA | BLOCO 16 |
| ENI (OP) 36.84% | ANPG 100.00% | TOTAL E&P BLOCK 16 A/S (OP) 65.00% |
| SONANGOL P&P 36.84% | | SONANGOL P&P 20.00% |
| SSI 26.32% | | TOTAL E&P CHISSONGA LDT 15.00% |
| BLOCO 16/21 | BLOCO 17 | BLOCO 17/06 |
| ANPG 100.00% | TOTAL E&P ANG (OP) 33.00% | TOTAL E&P ANG (OP) 30.00% |
| | ESSO 19.00% | SONANGOL P&P 30.00% |
| | BP EXPL. ANGOLA LDT (Block 17) 15.84% | SSI 27.50% |
| | EQUINOR ANGOLA 12.16% | SOMOIL S.A. 05.00% |
| | EQUINOR ANGOLA AS 10.00% | FALCON OIL 05.00% |
| | TOTAL EXP MBRIDE 05.00% | PTT E&P 02.50% |
| | SONANGOL P&P 05.00% | |
| BLOCO 18 | BLOCO 18/15 | BLOCO 20/11 |
| BP ANGOLA BLOCK 18 BV (OP) 36.34% | ANPG 100.00% | TOTAL E&P ANGOLA (OP) 50.00% |
| SSI 37.72% | | SONANGOL P&P 20.00% |
| SONANGOL P&P 16.28% | | BP EXPL. Kwanza Benguela) LTD 30.00% |
| BP EXPLORATION BETA LIMITED 09.66% | | |
| BLOCO 20/15 - LONTRA | BLOCO 21/09 | BLOCO 23 |
| ANPG 100.00% | TOTAL E&P ANGOLA Block 20-21 (OP) 80.00% | SONANGOL P&P(OP) 100.00% |
| | SONANGOL P&P 20.00% | |
| BLOCO 27 | BLOCO 28 | BLOCO 29 |
| SONANGOL P&P S.A. 100.00% | ENI (OP) 60.00% | TOTAL E&P Angola Block 29 S.A.S(Operador) 42.80% |
| | TIPTOP ENERGY LIMITED 20.00% | Equinor Angola Block 29 AS 22.80% |
| | SONANGOL P&P S.A. 20.00% | Sonangol P&P 20.00% |
| | | BP Explot. Angola (Kwanza Benguela) Ltd 8.80% |
| | | Petromex Angola E&P Limited 5.60% |
| BLOCO 30 | | |
| ESSO EXPL. PROD. ANG. (BLOCK 30) LTD 60.00% | | |
| SONANGOL P&P S.A. 40.00% | | |

ATIVIDADES EM ÁGUAS ULTRA-PROFUNDAS

| | | |
|---|---|-----------------|
| BLOCO - 31 | BLOCO - 32 | BLOCO 34 |
| BP (OP) 26.67% | TOTAL (OP) 30.00% | ANPG 100.00% |
| SONANGOL P&P 45.00% | SONANGOL P&P 30.00% | |
| SSI 31 15.00% | SONANGOL P&P 20.00% | |
| EQUINOR ANGOLA 13.33% | ESSO 15.00% | |
| | GALP 05.00% | |
| BLOCO 44 | BLOCO 45 | BLOCO 46 |
| ESSO EXPL. PROD. ANG. (BLOCK 44) LTD 60.00% | ExxonMobil Expl. Prod. ANG. (BLOCK 45) LTD 60.00% | ANPG 100.00% |
| SONANGOL P&P S.A. 40.00% | SONANGOL P&P S.A. 40.00% | |
| BLOCO 47 | BLOCO 48 | |
| ANPG 100.00% | TOTAL E&P ANGOLA BLOCK 48 B.V. (OP) 40.00% | |
| | SONANGOL PESQUISA E PRODUÇÃO S.A. 30.00% | |
| | QATAR PETROLEUM INTER. UPSTREAM LLC 30.00% | |

BLOCOS EM PROCESSO DE ABANDONO

| | | |
|-----------------------|-----------------------------------|----------------------------|
| BLOCO 19/11 | BLOCO 22/11 | BLOCO 24/11 |
| BP (OP) 50.00% | REPSOL ANGOLA 22 B.V. (OP) 30.00% | BP (OP) 50.00% |
| SONANGOL P&P 40.00% | SONANGOL P&P 50.00% | SONANGOL P&P 50.00% |
| CHINA SONANGOL 10.00% | EQUINOR 20.00% | |
| BLOCO 25/11 | BLOCO - 36/11 | BLOCO - 37/11 |
| TOTAL (OP) 35.00% | CONOCOPHILLIPS (OP) 50.00% | CONOCOPHILLIPS (OP) 30.00% |
| SONANGOL P&P 30.00% | SONANGOL P&P 50.00% | SONANGOL P&P 50.00% |
| EQUINOR 20.00% | | REPSOL 20.00% |
| BP 15.00% | | |
| BLOCO - 40/11 | | |
| TOTAL (OP) 40.00% | | |
| SONANGOL P&P 30.00% | | |
| EQUINOR 20.00% | | |
| PETRONAS 10.00% | | |

LEGENDA

- ÁREA EM EXPLORAÇÃO
- ÁREA EM PRODUÇÃO
- ÁREA LIVRE
- PROCESSO DE ABANDONO
- NEGOCIAÇÃO
- LICITAÇÃO 2019
- LICITAÇÃO 2020
- LICITAÇÃO 2021
- LICITAÇÃO 2023
- BLOCOS LIVRES
- BACIAS DE ANGOLA
- BACIAS INTERIORES
- Dados Culturais
- CAPITAL
- FRONTEIRA
- RIO
- MILHAS
- PROVÍNCIAS

